



VERIX
ENGINEERS

MFG. : CONTROL PANEL ACCESSORIES

PRODUCT CATLOUGE



RAVI ENTERPRISE
PANEL BOARD ACCESSORIES

ABOUT US

Established in the year of 2000, we **"VERIX ENGINEERS"** are the leading, Manufacturer of an extensive array of Panel Lock, Panel Hinges, Panel Industrial Handle, Cable Drag Chain, Air Vent Grill, Rubber Grommets, Three Point Lock, Bakelite Knob, etc. We direct all our activities to cater the expectations of customers by providing them excellent quality products as per their gratifications. Moreover, we follow moral business policies and crystal pure transparency in all our transactions to keep healthy relations with the customers.

In order to execute our business operations in an organized manner, we have developed a sophisticated infrastructure facility that is spread across a vast area. Our infrastructure facility is installed with high-tech machinery and cutting-edge technologies. In order to sustain a conducive working environment, our infrastructure comprises various units like manufacturing, quality testing, warehousing & packaging, etc. Significantly supported by an expert team of professionals, they systematically carry out the entire business operations. Owing to the proficiency of our professionals, we have been able to constructively complete the goals of our organization. As a quality centric firm, we make certain our clients that products offered to them are checked on several quality parameters.

Under the guidance of our mentor "Mr. Rajiv Patel", we have become a professional and prominent organization in this domain. His vast industry experience and honourable trade policies help us to attain your organizational goals.

WHY US

Owing to our expertise, we have been able to offer our customers with quality-assured range of products in varied specifications.

Owing to following reasons, we have been able to outshine others in this highly competitive market:

- High-quality products
- Skilled team of professionals
- Ethical business policies
- Easy payment modes
- Transparent dealings
- Wide distribution network
- Customized packaging



OUR TEAM

Our workforce is the backbone of our organization, which enables us to meet our targets and goals efficiently. We recruit only the best professionals in the industry to work for our organization, so that they add value to the organization.

The professionals who work in our organization are as follows:

- Engineers
- Skilled technicians
- Researchers
- Quality inspectors
- Sales and marketing staff

All our professionals are highly experienced and have vast domain knowledge. They are well aware of the latest technologies that are to be incorporated in the manufacturing process. With their sincere efforts we are able to comprehend the exact requirements of our clients. This helps us catering products that are industry specific. Thus our team of professionals plays a major role in the success of our organization.

PRODUCTION UNIT



CERTIFICATIONS



Government of India
Ministry of Commerce and Industry
Directorate General of Foreign Trade
Office of the Additional Director General of Foreign Trade, Ahmedabad
3rd Floor, HUDCO Bhawan, Sakinaka Road, Navrangpura, AHMEDABAD

Importer-Exporter Code

This is to certify that **VERIX ENGINEERS** is issued an Importer-Exporter Code (IEC) ANQP9709G2 with details as follows:-

IEC:	ANQP9709G2
आईएक्सआर कोड (IEC) / PAN:	ANQP9709G2
नाम का हिस्सा / Firm Name:	VERIX ENGINEERS
व्यवसाय की प्रकृति / Nature of Concern:	Proprietorship
व्यवसाय की तिथि / Date of Issue:	08/06/2022
पंजीकृत पता / Registered Address:	B-44 Maruti Industrial estate, phase-1, 1st chokri sub, G.I.D.C. Vardha, AHMEDABAD, AHMEDABAD, GUJARAT, 382445
हस्ताक्षरकर्ता / Name of the Signatory:	HABEN RAHV PATEL
निर्देशक / Partner Details:	Refer online at https://dgft.gov.in or scan the QR Code
शाखा / Branch Details:	Refer online at https://dgft.gov.in or scan the QR Code

Last Modified : 08/06/2022
File Number : AHMEDAPP1Y0000794AM23

Note : This is a system-generated certificate. Authenticity / Updated details of the IEC can be checked at official DGFT website <https://dgft.gov.in> by entering the IEC and Firm Name under Services > View Any IEC Details. You can also authenticate the certificate by scanning the QR code.



INDEX

PRODUCTS	PAGE NO.
PANEL LOCK	01
LOCK ACCESSORIES	23
3 POINT LOCK	27
PANEL HANDLES	33
PANEL HINGES	39
AIR-VENT / FAN FILTERS	51
DRAG CHAIN	55
KNOB	57
BUS-BAR	59
GROMMENT	61
PVC YELLOW FERRULE	62
WIRE ACCESSORIES	63
OTHER ACCESSORIES	67

OUR MOST CONSUMABLES MANUFACTURING PRODUCTS



+91 83065 20468
+91 83066 20468



info@verixengineers.com
sales@verixengineers.com



www.ravi-enterprise.com
www.verixengineers.com

OUR MOST CONSUMABLES MANUFACTURING PRODUCTS



+91 83065 20468
+91 83066 20468



info@verixengineers.com
sales@verixengineers.com



www.ravi-enterprise.com
www.verixengineers.com



RLS 41

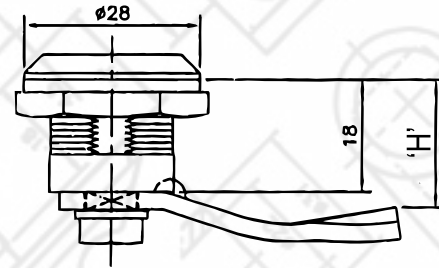
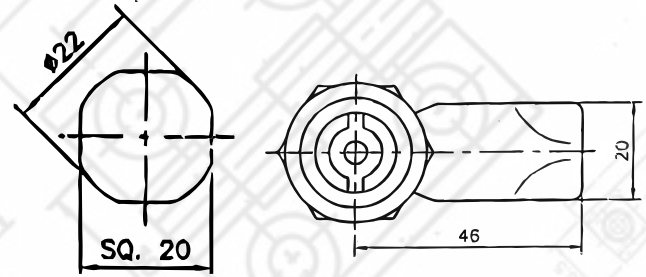


RLS 43



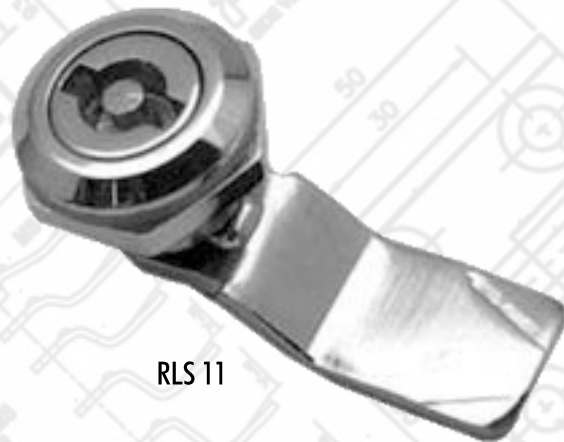
RLS 44

- **Material** : Polyamide Housing, MS Lever, Polyamide Nut, Polyamide Insert
- **Finish** : Matt Black



'H' = 20mm, 25mm, 30mm, 35mm, 40mm, 45mm, & 50mm

MODEL NO.	SPECIFICATIONS
RLS 41	Polyamide Pin Type Lock
RLS 43	Polyamide Triangle Type Lock
RLS 44	Polyamide Minus Type Lock



RLS 11



RLS 12

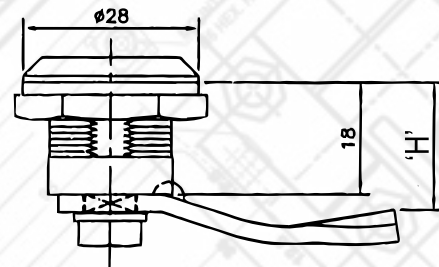
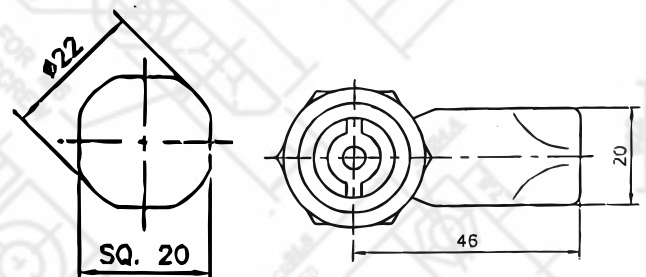


RLS 13



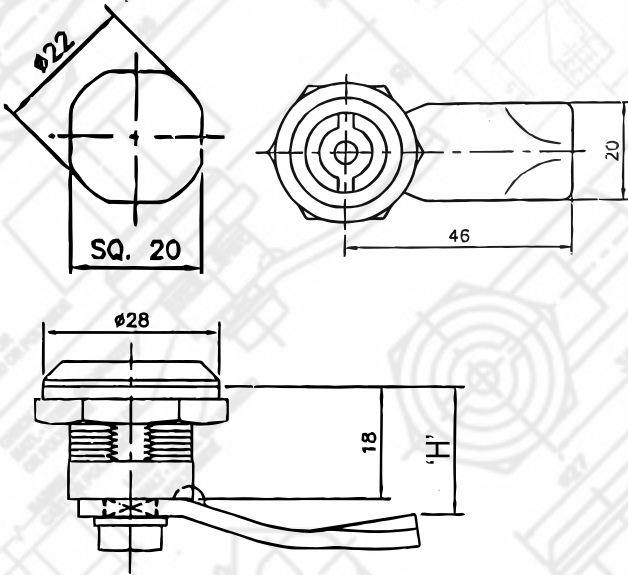
RLS 14

- **Material** : Die Cast Housing, MS Lever, MS Nut, Die Cast Insert
- **Finish** : Bright Chrome



'H' = 20mm, 25mm, 30mm, 35mm, 40mm, 45mm, & 50mm

MODEL NO.	SPECIFICATIONS
RLS 11	Die Cast Pin Type
RLS 12	Die Cast Square Type
RLS 13	Die Cast Triangle Type
RLS 14	Die Cast Minus Type



RLS 11-SS



RLS 12-SS



RLS 13-SS

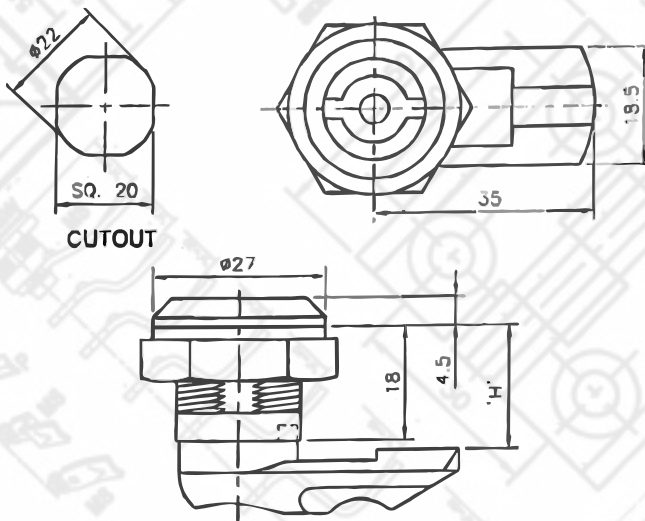


RLS 14-SS

- **Material** : SS Housing, SS Lever, SS Nut, SS Insert

- **Finish** : Bright Chrome

MODEL NO.	SPECIFICATIONS
RLS 11-SS	Stainless Steel - 304 Pin Type
RLS 12-SS	Stainless Steel - 304 Square Type
RLS 13-SS	Stainless Steel - 304 Triangle Type
RLS 14-SS	Stainless Steel - 304 Minus Type



RLS 41 P

Various Inserts available



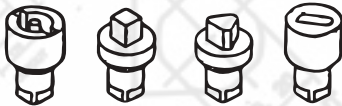
- **Material** : Polyamide Housing, Polyamide Lever, Polyamide Nut, Polyamide Insert

- **Finish** : Matt Black

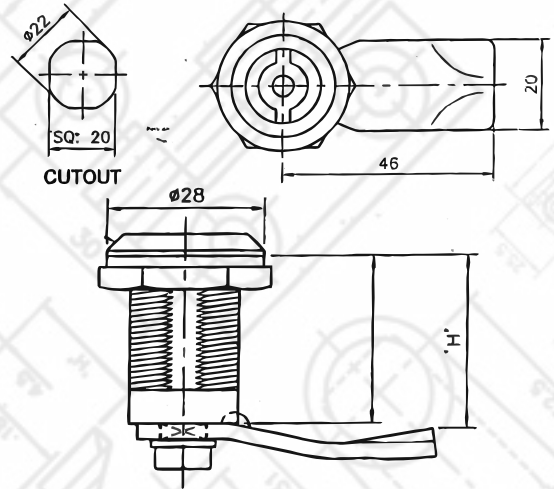
MODEL NO.	SPECIFICATIONS
RLS 41 P	Full Polyamide Pin Type Lock
RLS 43 P	Full Polyamide Triangle Type Lock
RLS 44 P	Full Polyamide Minus Type Lock



Various Inserts available



- **Material** : Die Cast Housing, MS Lever, MS Nut, Die cast Insert
- **Finish** : Bright Chrome


RLS 11 x H, RLS 12 x H, RLS 13 x H, RLS 14 x H
'H' = 30mm, 40mm, 50mm

MODEL NO.	SPECIFICATIONS
RLS 11 x H	Die Cast Pin Type Lock
RLS 12 x H	Die Cast Square Type Lock
RLS 13 x H	Die Cast Triangle Type Lock
RLS 14 x H	Die Cast Minus Type Lock



RLS 45 x 30



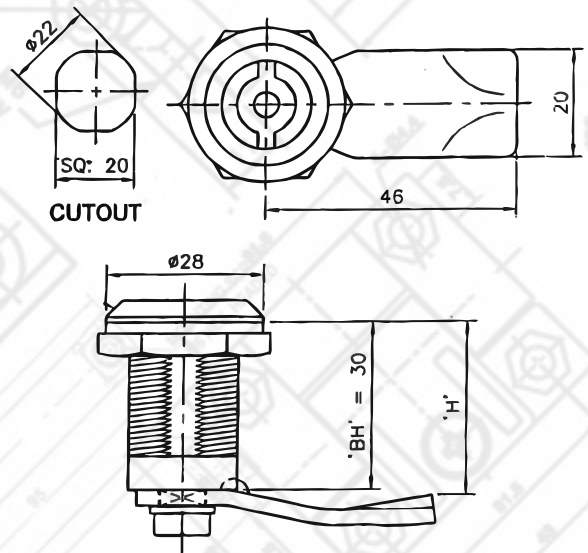
RLS 41 x 30

RLS 43 x 30

RLS 44 x 30

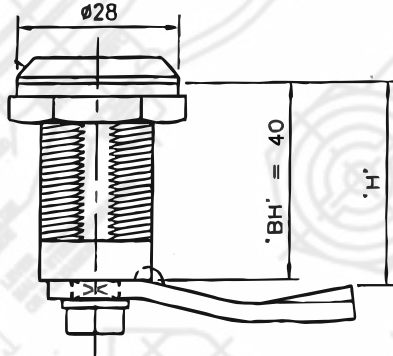
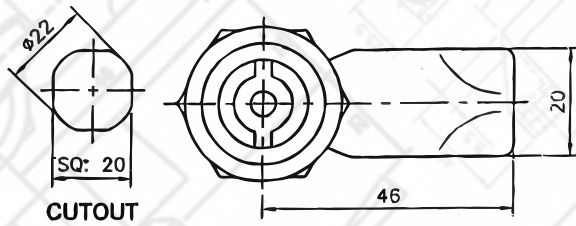
RLS 46 x 30

- **Material** : Polyamide Housing, MS Lever, Polyamide Nut, Polyamide Insert
- **Finish** : Matt Black



'H' = 30mm Long Body Lock

MODEL NO.	SPECIFICATIONS
RLS 41 x 30	Pin Type Insert 30 mm Long Body Lock
RLS 43 x 30	Triangle Type Insert 30 mm Long Body Lock
RLS 44 x 30	Minus Type Insert 30 mm Long Body Lock
RLS 45 x 30	Small Wing Type Insert 30 mm Long Body Lock
RLS 46 x 30	Big Wing Type Insert 30 mm Long Body Lock

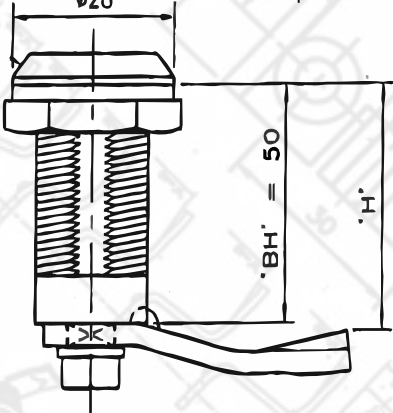
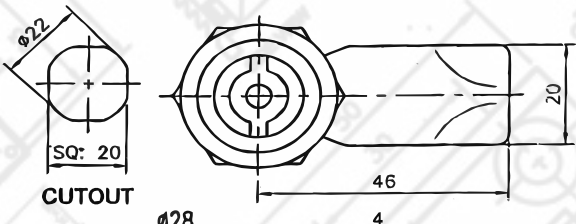


'H' = 40mm Long Body Lock

MODEL NO.	SPECIFICATIONS
RLS 41 x 40	Pin Type Insert 40 mm Long Body Lock
RLS 43 x 40	Triangle Type Insert 40 mm Long Body Lock
RLS 44 x 40	Minus Type Insert 40 mm Long Body Lock
RLS 45 x 40	Small Wing Type Insert 40 mm Long Body Lock
RLS 46 x 40	Big Wing Type Insert 40 mm Long Body Lock



- **Material** : Polyamide Housing, MS Lever, Polyamide Nut, Polyamide Insert
- **Finish** : Matt Black

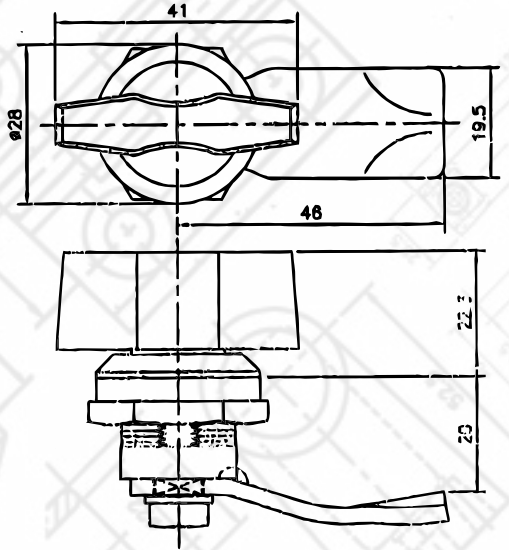


'H' = 50mm Long Body Lock

MODEL NO.	SPECIFICATIONS
RLS 41 x 50	Pin Type Insert 50 mm Long Body Lock
RLS 43 x 50	Triangle Type Insert 50 mm Long Body Lock
RLS 44 x 50	Minus Type Insert 50 mm Long Body Lock
RLS 45 x 50	Small Wing Type Insert 50 mm Long Body Lock
RLS 46 x 50	Big Wing Type Insert 50 mm Long Body Lock



- **Material** : Polyamide Housing, MS Lever, Polyamide Nut, Polyamide Insert
- **Finish** : Matt Black


RLS 45


- **Material** : Polyamide Housing, MS Lever, Polyamide Nut, Polyamide Wing
- **Finish** : Matt Black

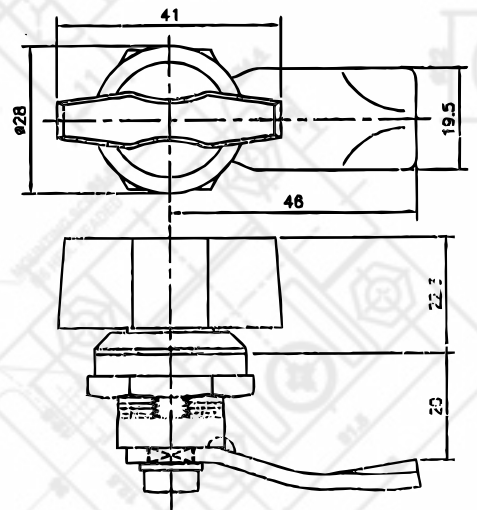
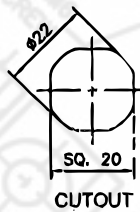
MODEL NO.

RLS 45

SPECIFICATIONS

Polyamide Small Wing Type


RLS 15

RLS 25


- **Material** : Die Cast Housing, MS Lever, MS Nut, Die Cast / Polyamide Wing
- **Finish** : Bright Chrome

MODEL NO.

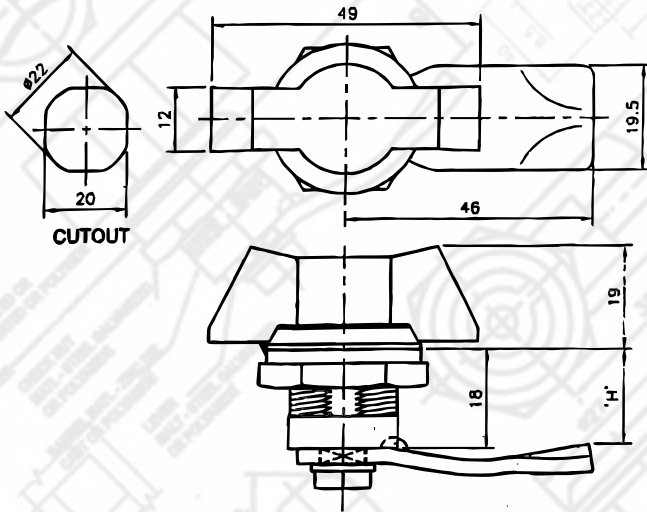
RLS 25

SPECIFICATIONS

Die Cast Body - Nylon Wing Type Lock

RLS 15

Die Cast Body - Die Cast Wing Type Lock



MODEL NO.

RLS 46

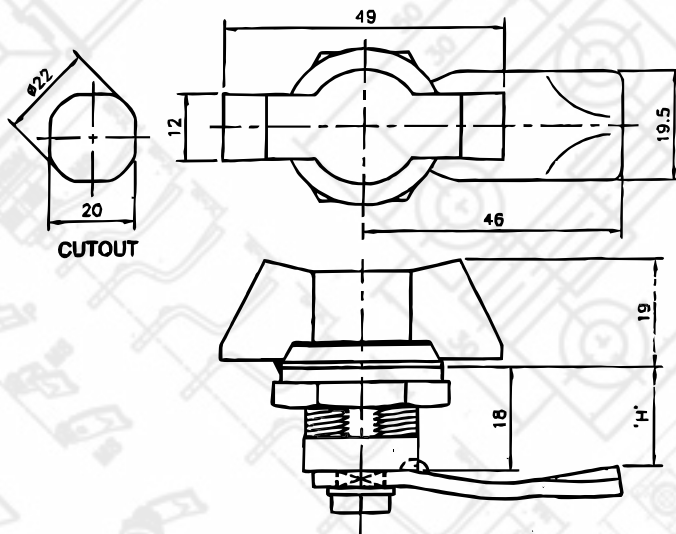
SPECIFICATIONS

Polyamide Big Wing Type Lock



RLS 46

- **Material** : Polyamide Housing, MS Lever, Polyamide Nut, Polyamide Wing
- **Finish** : Matt Black



MODEL NO.

RLS 26

SPECIFICATIONS

Die Cast Body - Polyamide Big Wing Type Lock



RLS 26

- **Material** : Die Cast Housing, MS Lever, Die Cast Nut, Polyamide Wing
- **Finish** : Matt Black

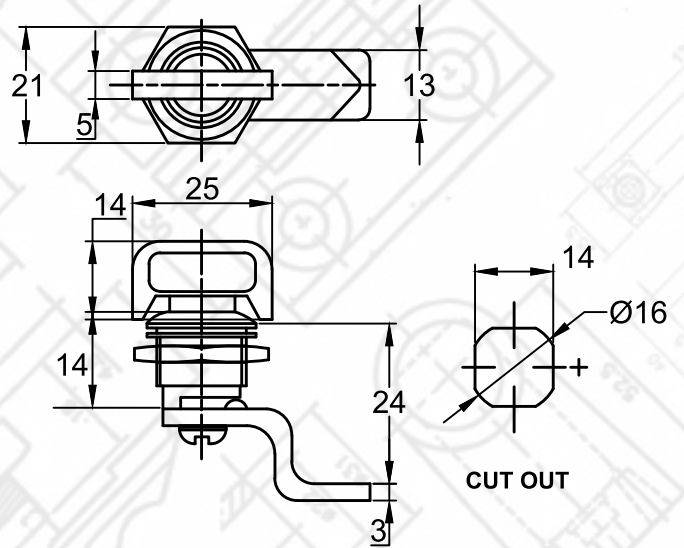

+91 83065 20468
+91 83066 20468

info@verixengineers.com
sales@verixengineers.com

www.ravi-enterprise.com
www.verixengineers.com



RLS 15



- **Material** : Die Cast Housing, MS Lever, MS Nut, Polyamide Wing
- **Finish** : Bright Chrome

MODEL NO.

RLS 15

SPECIFICATIONS

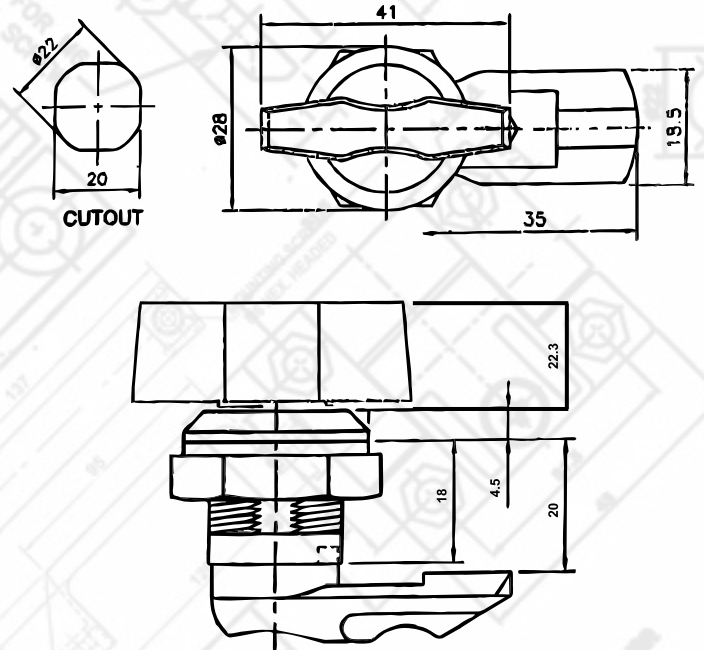
Die Casting Body Polyamide Small Wing



RLS 45 P



RLS 46 P



- **Material** : Polyamide Body, Polyamide Liver, Polyamide Insert
- **Finish** : Matt Finish

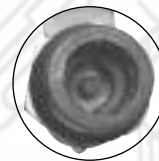
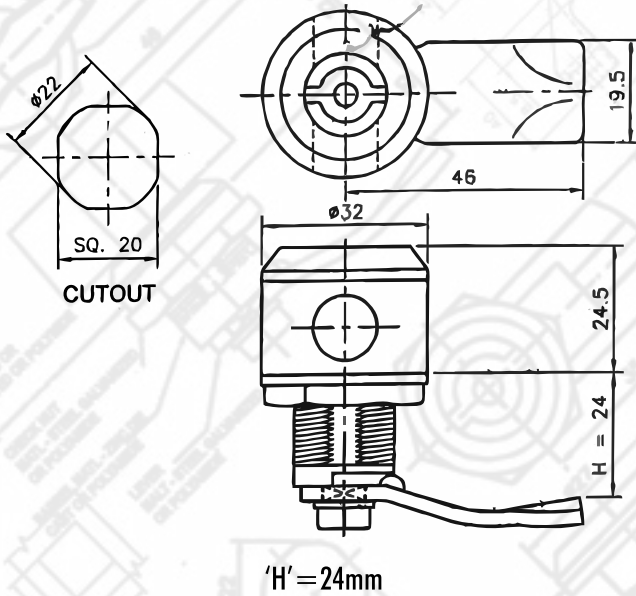
MODEL NO.

RLS 45 P
RLS 46 P

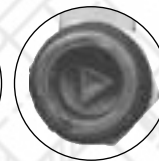
SPECIFICATIONS

Full Polyamide Wing Lock

Full Polyamide Big Wing Lock



RLS 41 Pad



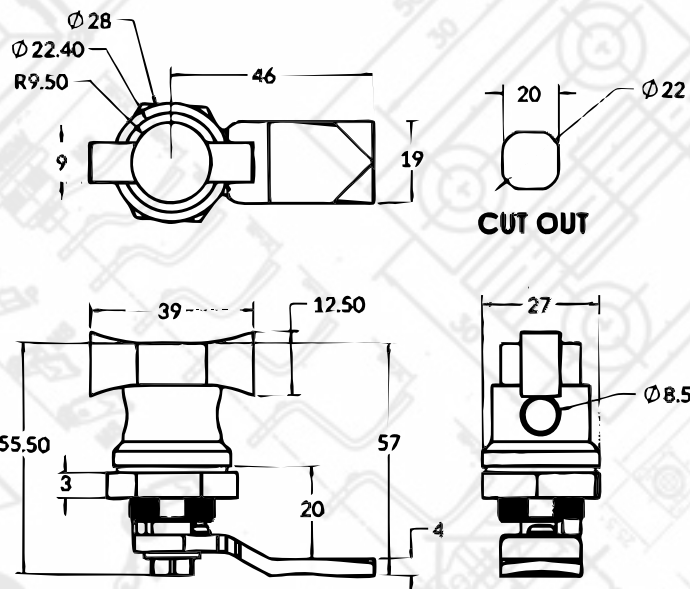
RLS 43 Pad



RLS 44 Pad

- **Material** : Polyamide Housing, MS Lever, MS Nut, Polyamide Insert
- **Finish** : Matt Black

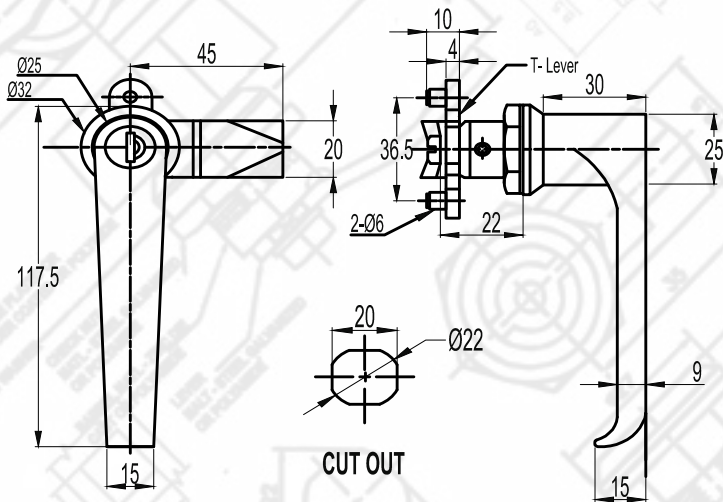
MODEL NO.	SPECIFICATIONS
RLS 41 Pad	Pad Type Lock Pin Type Insert
RLS 43 Pad	Pad Type Lock Triangle Type Insert
RLS 44 Pad	Pad Type Lock Minus Type Insert



- **Material** : Polyamide Housing, MS Lever, MS Nut, Polyamide Wing
- **Finish** : Matt Black

MODEL NO.	SPECIFICATIONS
RLS 26 LS	Pad Type Lock Wing Type Insert




MODEL NO.
SPECIFICATIONS

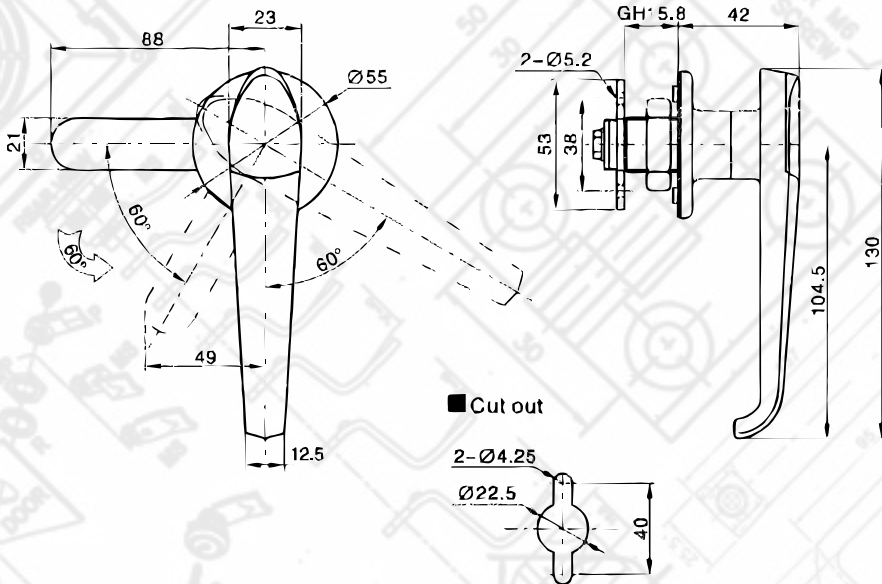
RLL 05

L Type Zinc Die Casting Lock without Key

RLL 05 K

L Type Zinc Die Casting Lock with Key

- **Material** : Die Cast Housing, MS Lever, MS Nut, Die Cast Handle
- **Finish** : Matt Black


MODEL NO.
SPECIFICATIONS

MS 306 - 2 - 1

L Type Handle Lock with Key

- **Material** : Zinc Die Cast Body & Nut, Zinc Plating Cam
- **Finish** : Bright Chrome Plating


+91 83065 20468
+91 83066 20468

info@verixengineers.com
sales@verixengineers.com

www.ravi-enterprise.com
www.verixengineers.com

PANEL LOCK

LOCK
ACCESSORIES

3 POINT LOCK

PANEL HANDLES

PANEL HINGES

AIR-VENT
FAN FILTERS

DRAG CHAIN

KNOB

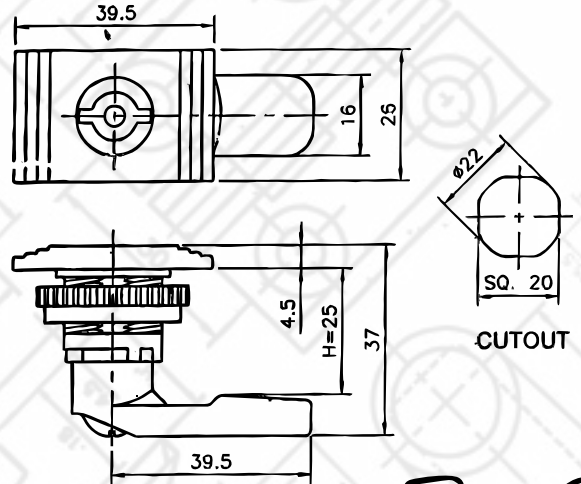
BUS-BAR

GROMMET

PVC YELLOW
FERRULE

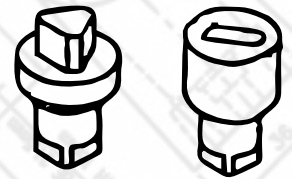
Wire
ACCESSORIES

OTHER
ACCESSORIES



CUTOUT

Various insert available in Polyamide



- **Material** : Polyamide Housing, Polyamide Lever, Polyamide Nut, Polyamide Insert
- **Finish** : Bright Chrome

MODEL NO.

RLS 71- R

SPECIFICATIONS

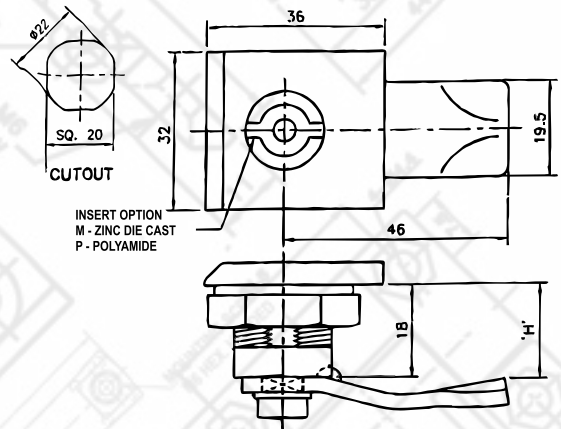
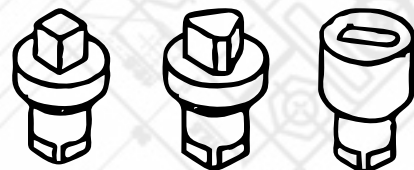
Nylon Lock Pin Type, Triangle, Minus, Insert



RLS 301

RLS 201

RLS 101


INSERT OPTION
M - ZINC DIE CAST
P - POLYAMIDE


Various insert available in die Cast & Polyamide

- **Material** : Polyamide / Die Cast Housing, MS Lever, MS / Polyamide Nut, Die Cast / Polyamide Insert
- **Finish** : Bright Chrome / Matt Black

MODEL NO.

RLS 101

RLS 201

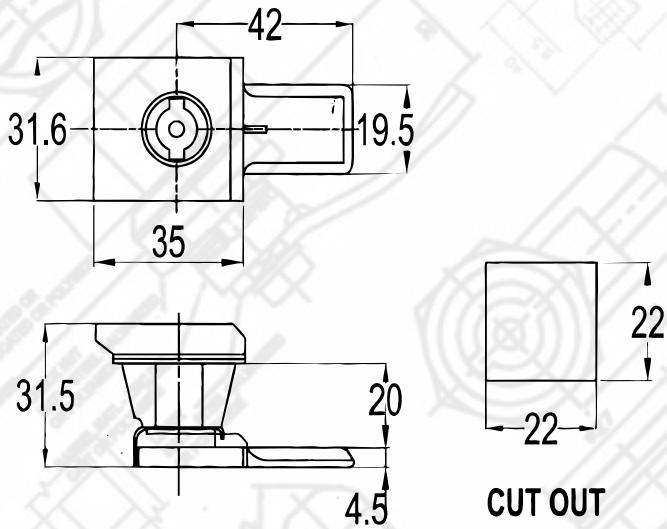
ELS 301

SPECIFICATIONS

Polyamide Housing with Die Cast insert

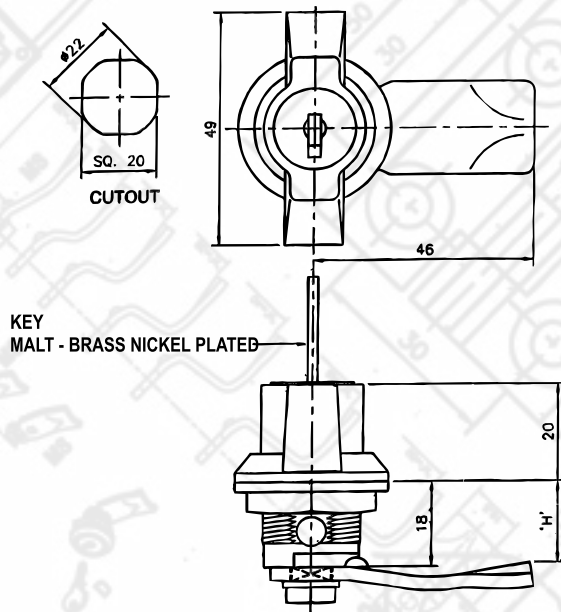
Polymide Housing with Polymide insert

Die Cast Housing with Die Cast Insert



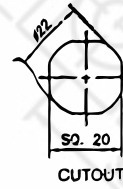
- **Material** : Die Cast Body, Nut, MS Lever
- **Finish** : Matt Finish

MODEL NO.	SPECIFICATIONS
RLS 11/R	Rittal Type Square Body Lock

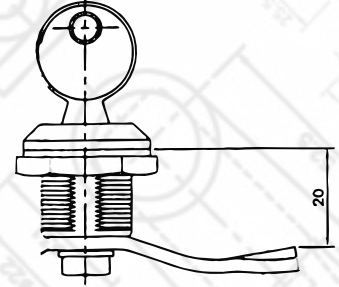
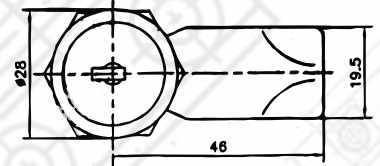


- **Material** : Die Cast Housing, MS Lever, MS Nut, Die Cast Wing
- **Finish** : Matt Black

MODEL NO.	SPECIFICATIONS
RLS 18	Big Wing with Key Type Lock



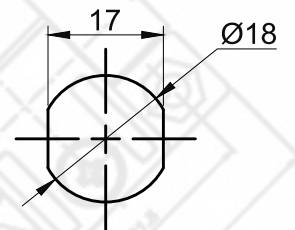
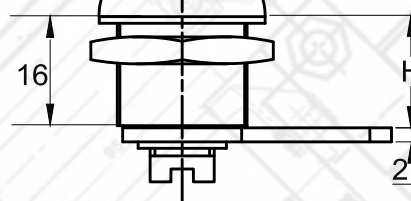
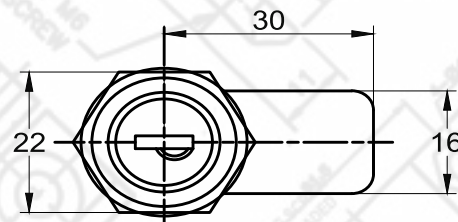
CUTOUT



- **Material** : Die Cast Housing, MS Lever, MS Nut, MS Key, Die Cast Insert
- **Finish** : Bright Chrome

MODEL NO.
RLS 17

SPECIFICATIONS
Key Type Lock

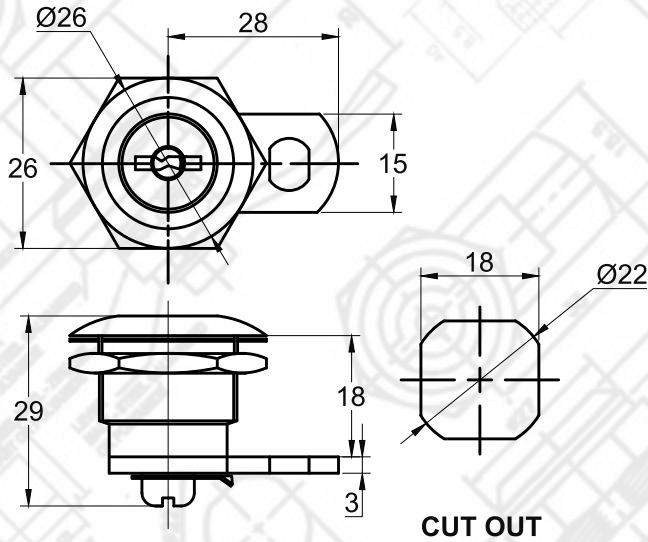


CUT OUT

- **Material** : Die Cast Housing, MS Lever, MS Nut, MS Key, Die Cast Insert
- **Finish** : Bright Chrome

MODEL NO.
SL 403

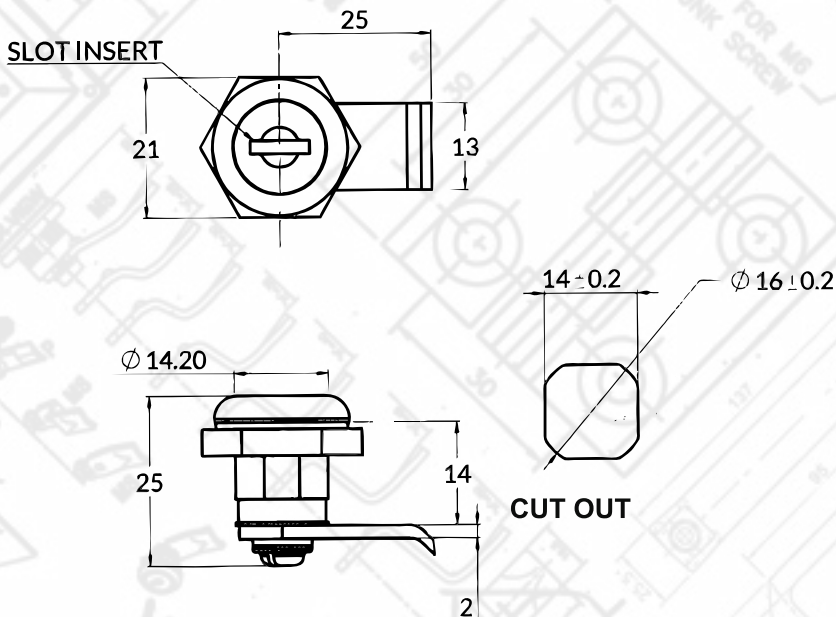
SPECIFICATIONS
Key Type Lock



MODEL NO.
KL 004

SPECIFICATIONS
Key Type Lock

- **Material** : Die Cast Body, MS Nut, MS Lever, MS Key
- **Finish** : Bright Chrome

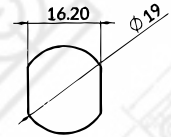
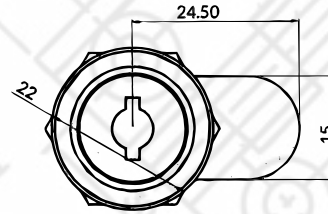


MODEL NO.
KL 001
KL 001 A

SPECIFICATIONS
Key Type Lock
Key Type Lock

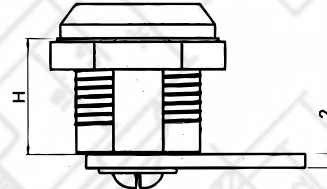
- **Material** : Die Cast Body, MS Nut, MS Lever, Moulded Key
- **Finish** : Bright Chrome

Different Key Combination Available



Cut out

Note: H depends on your request.



H
16
18
20
25
30

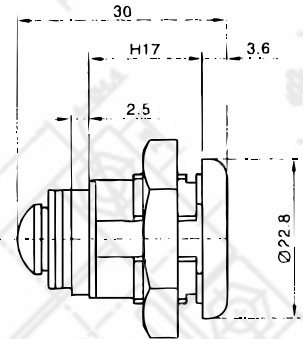
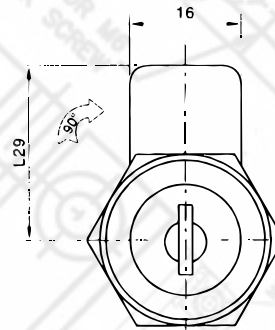
- **Material** : Zinc Die Cast Body, MS Nut, MS Lever, Moulded Key
- **Finish** : Bright Chrome

MODEL NO.

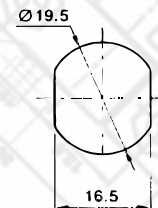
KLL 05-2

SPECIFICATIONS

Key Type Lock with Different Key Combination



■ Cut Out



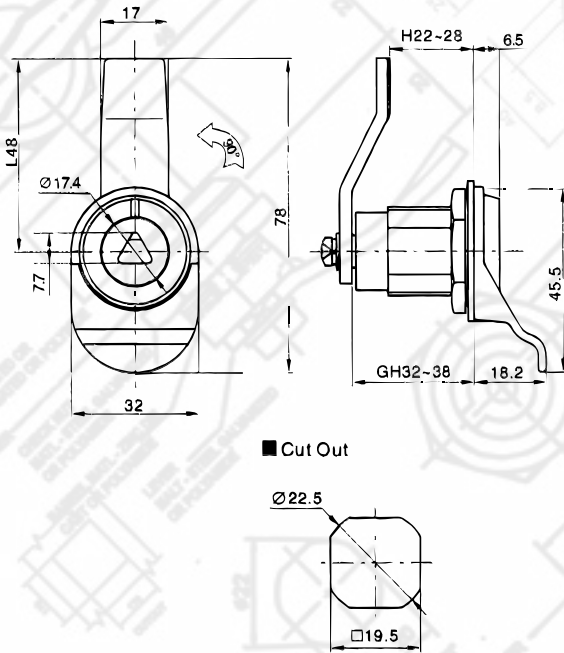
- **Material** : Die Cast Housing, MS Lever, MS Nut, Die Cast Insert, MS Key
- **Finish** : Bright Chrome

MODEL NO.

KLL 03

SPECIFICATIONS

Key Type Lock



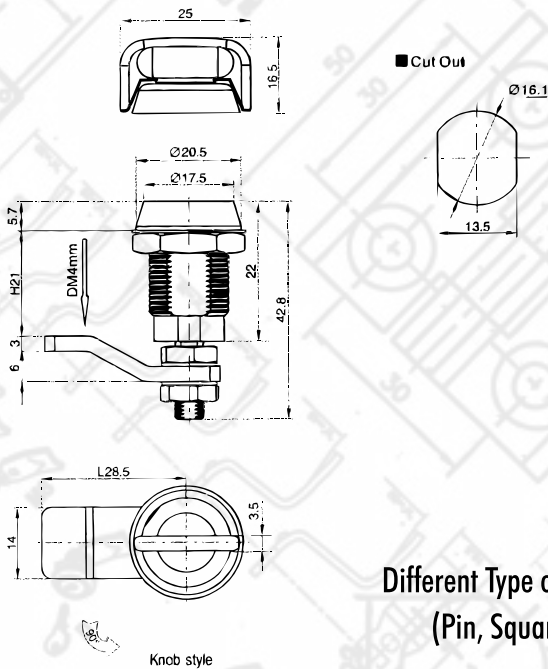
MODEL NO.
MS 711-1-1L

SPECIFICATIONS
Compression Locks

Compression Lock



- **Material** : Zinc Die Cast Body & Key
- **Finish** : Bright Chrome



Different Type of Insert Available
(Pin, Square, Triangles)

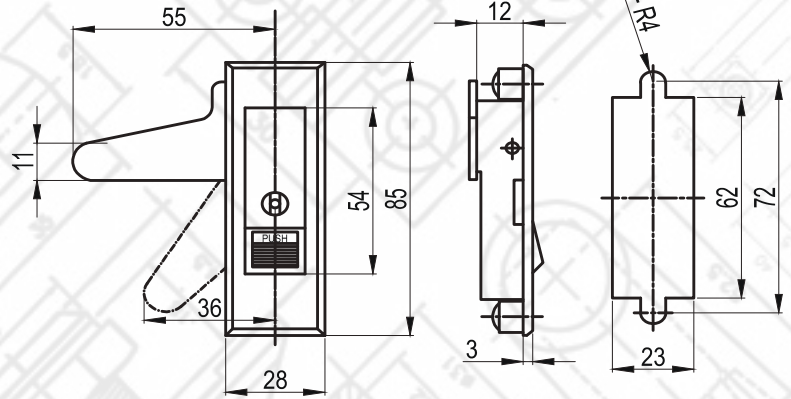
MODEL NO.
MS 815-1-3

SPECIFICATIONS
Compression Locks Knob Type

Compression Lock



- **Material** : Zinc Die Cast Body, Die Cast Knob
- **Finish** : Matt Black



CUT OUT

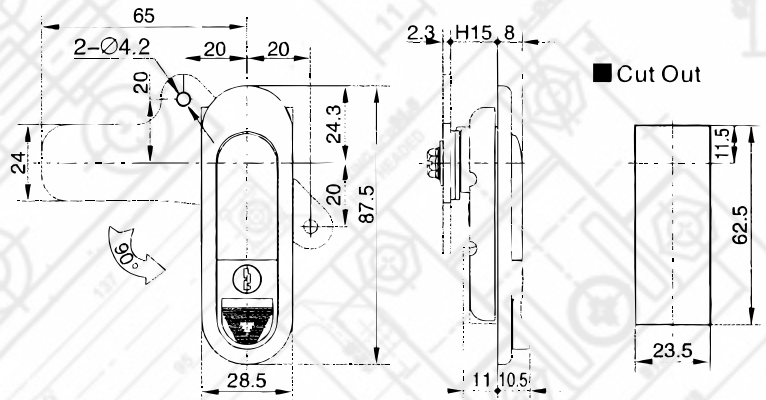
- **Material** : Zinc Die Cast Lock,
MS Key
- **Finish** : Bright Chrome

MODEL NO.

MS 603

SPECIFICATIONS

Red Button Push Type Lock



■ Cut Out

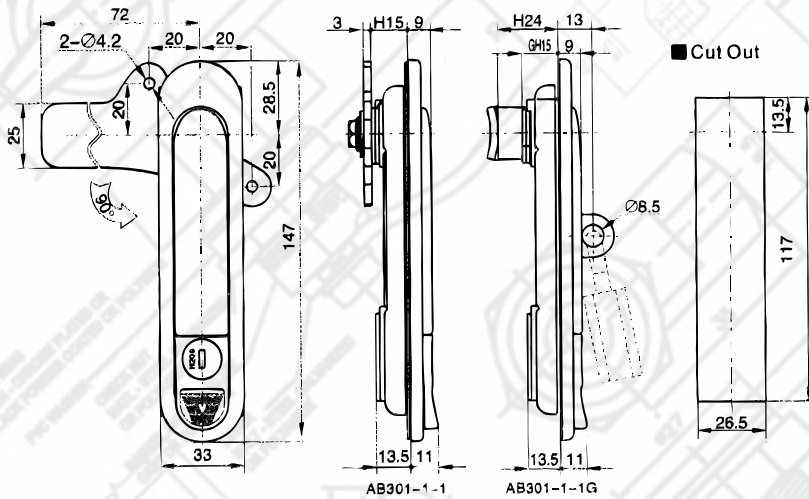
- **Material** : Die Cast Housing,
MS Key
- **Finish** : Bright Chrome

MODEL NO.

AB 301-3A-1

SPECIFICATIONS

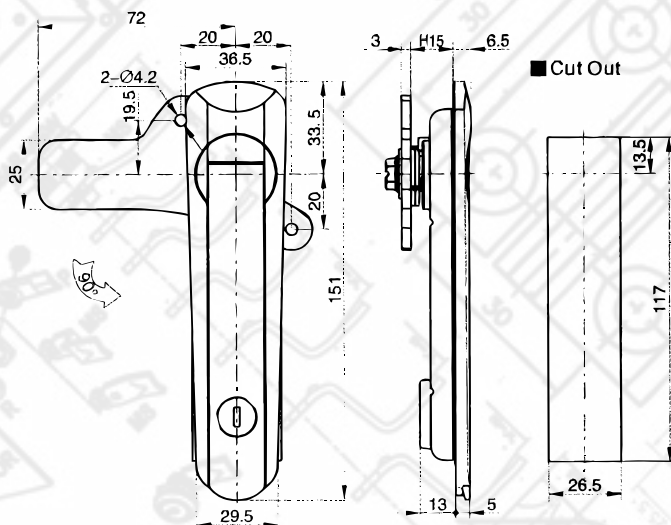
Key Type Plan Lock



MODEL NO.
AB 301-1-1

SPECIFICATIONS
Plane Lock with Key Type

- **Material** : Zinc Die Cast Body & Key
- **Finish** : Bright Chrome



MODEL NO.
AB 401-1-1
AB 401-1-2

SPECIFICATIONS
Plane Lock with Key
Plane Lock Without Key

- **Material** : Zinc Die Cast Body, MS Lever, MS Key
- **Finish** : Bright Chrome



PANEL LOCK

LOCK
ACCESSORIES

3 POINT LOCK

PANEL HANDLES

PANEL HINGES

AIR-VENT
FAN FILTERS

DRAG CHAIN

KNOB

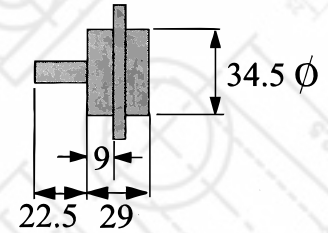
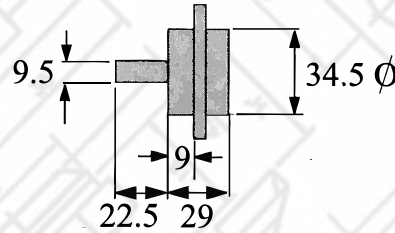
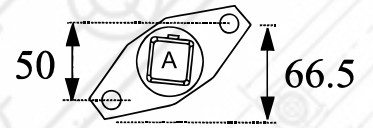
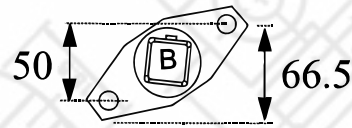
BUS-BAR

GROMMET

PVC YELLOW
FERRULE

Wire
ACCESSORIES

OTHER
ACCESSORIES

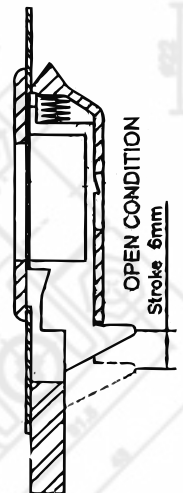
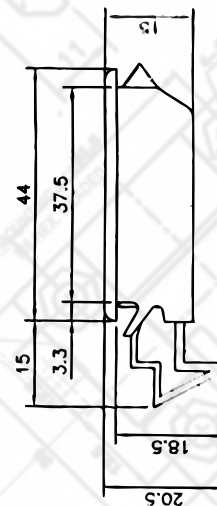
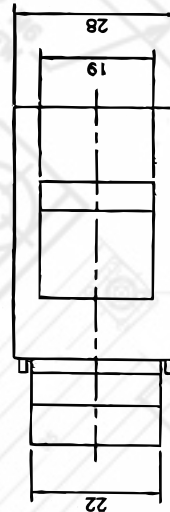


- **Material** : Zinc Die Cast Material
- **Finish** : Bright Chrome

MODEL NO.

SPECIFICATIONS

Caster Lock with Key



- **Material** : Polyamide Material
- **Finish** : Matt Black

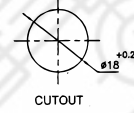
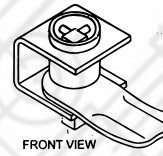
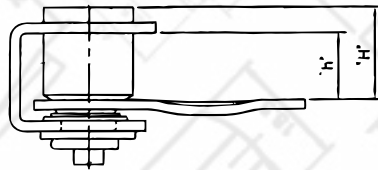
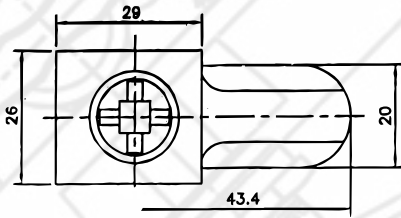
MODEL NO.

RLS 73

SPECIFICATIONS

Sliding Lock

ECO LOCK



h	H
15	20
20	25
25	30
30	35
35	40
40	45
45	50

15MM



RLS - 01

20 MM



RLS - 02

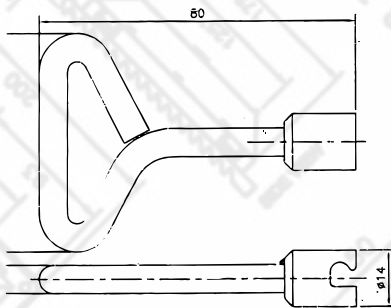
25MM



RLS - 03

Material - MS Panel Lock

Finish - Zinc Yellow Plating



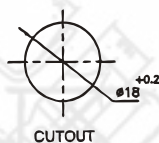
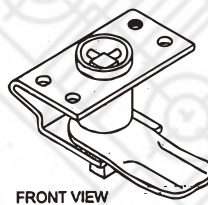
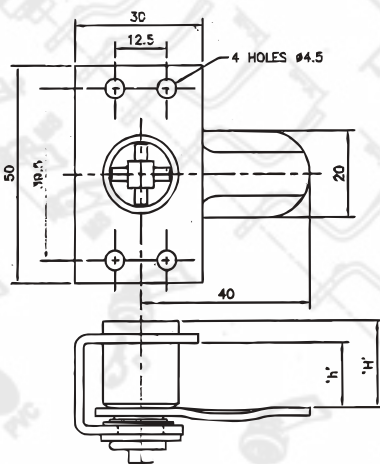
RLK - 13



Material - MS Key

ECO LOCK KEY

Finish - Zinc Yellow Plating



RLS - 08

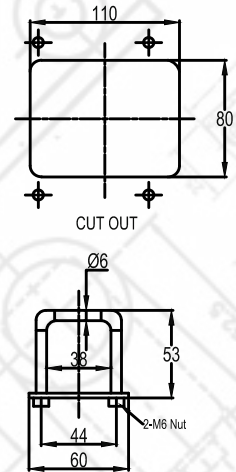
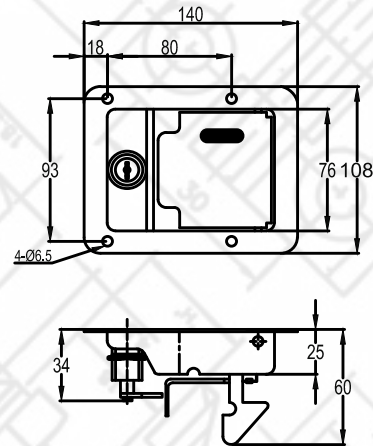
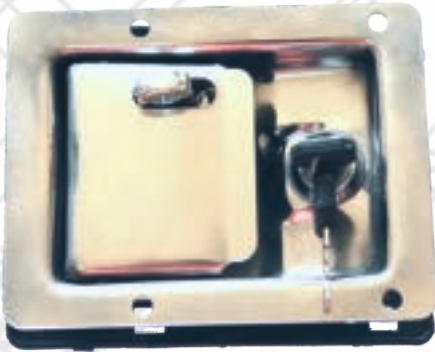


h	H
15	20
20	25
25	30
30	35
35	40
40	45
45	50

Material - MS Panel Lock

ECO LOCK STANDARD

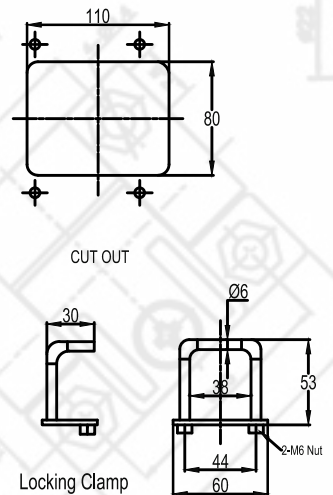
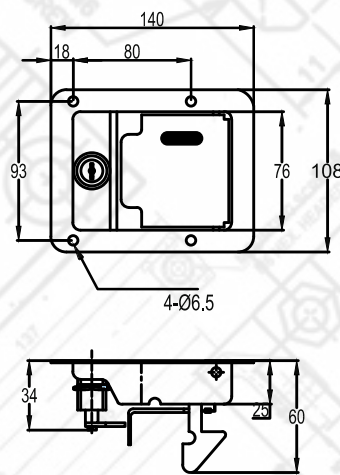
Finish - Zinc Yellow Plating



- **Material** : Stainless Steel Lock, Moulded Key
- **Finish** : Natural Chrome Finish

MODEL NO.
SL 007 SS

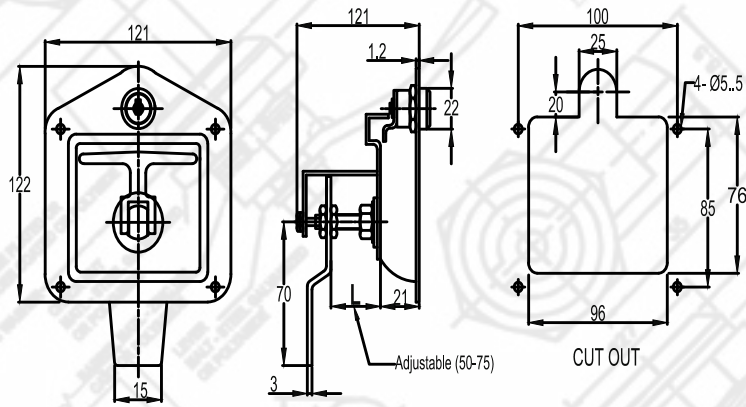
SPECIFICATIONS
SS Canopy Lock



- **Material** : MS Lock with Molded Key
- **Finish** : Black Powder Coating

MODEL NO.
SL 007 MS

SPECIFICATIONS
Canopy Lock



MODEL NO.	SPECIFICATIONS
SL 004 SS	SS Canopy Lock
SL 004 MS	MS Canopy Lock

- **Material** : Stainless Steel Canopy Lock
- **Finish** : Natural Chrome Finish



MODEL NO.	SPECIFICATIONS
	Freezer Lock Small
	Freezer Lock Big

- **Material** : Die Cast Material
- **Finish** : Black Powder Coated

LOCK ACCESSORIES

PANEL LOCK

LOCK
ACCESSORIES

3 POINT LOCK

PANEL HANDLES

PANEL HINGES

AIR-VENT
FAN FILTERS

DRAG CHAIN

KNOB

BUS-BAR

GROMMET

PVC YELLOW
FERRULE

Wire
ACCESSORIES

OTHER
ACCESSORIES



RLK 01 PIN KEY - DIE CAST



RLK 02 SQUARE KEY - DIE CAST



RLK 03 TRIANGLE KEY - DIE CAST



RLK 04 MINUS KEY - DIE CAST



RLK 03 P TRIANGLE KEY - POLYAMIDE



RLK 01 P PIN KEY - POLYAMIDE

LOCK ACCESSORIES



PIN TYPE KEY POLYAMIDE



OPEN CLOSE THICK BORDER



LABLE WITH COMPANY NAME



EMERGENCY STOP



FOUR WAY KEY - POLYAMIDE



FOUR WAY KEY - DIE CAST

PANEL LOCK

LOCK
ACCESSORIES

3 POINT LOCK

PANEL HANDLES

PANEL HINGES

AIR-VENT
FAN FILTERS

DRAG CHAIN

KNOB

BUS-BAR

GROMMET

PVC YELLOW
FERRULE

Wire
ACCESSORIES

OTHER
ACCESSORIES

LOCK ACCESSORIES

PANEL LOCK

LOCK
ACCESSORIES

3 POINT LOCK

PANEL HANDLES

PANEL HINGES

AIR-VENT
FAN FILTERS

DRAG CHAIN

KNOB

BUS-BAR

GROMMET

PVC YELLOW
FERRULE

Wire
ACCESSORIES

OTHER
ACCESSORIES



MS NUT - 22.5mm



PVC NUT - 22.5mm



POLYAMIDE LEVER



MS LEVER



RLS 64 - FINGER SUPPORT



PVC LEVER

LOCK ASSEMBLY COMBINATIONS FOR RLS SERIES

PANEL LOCK

LOCK
ACCESSORIES

3 POINT LOCK

PANEL HANDLES

PANEL HINGES

AIR-VENT
FAN FILTERS

DRAG CHAIN

KNOB

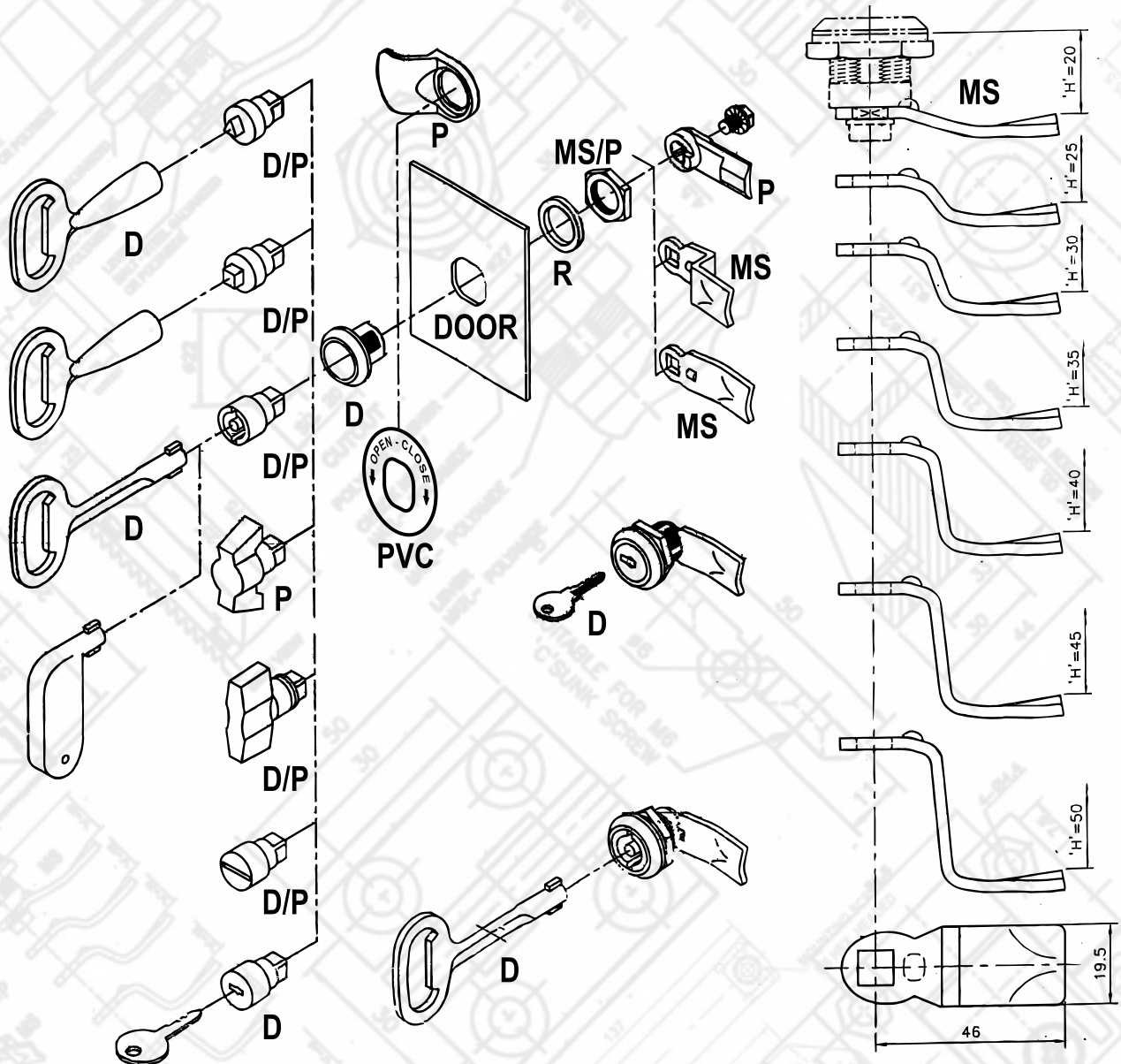
BUS-BAR

GROMMET

PVC YELLOW
FERRULE

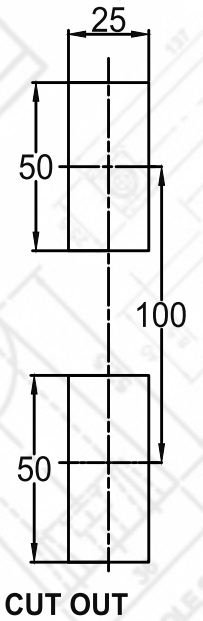
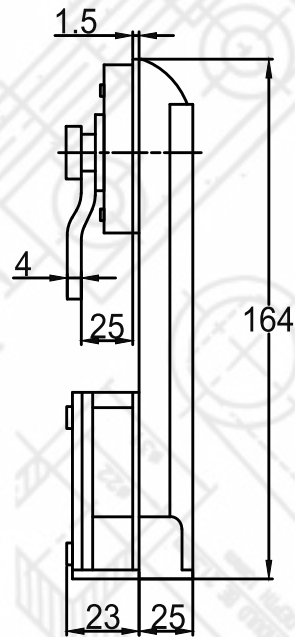
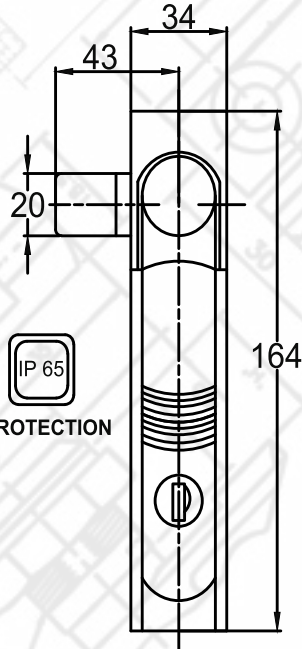
Wire
ACCESSORIES

OTHER
ACCESSORIES



Die Cast (D)
Polyamide (P)
Rubber (R)
Poly Vinyl Chloride (PVC)
Mild Steel (MS)

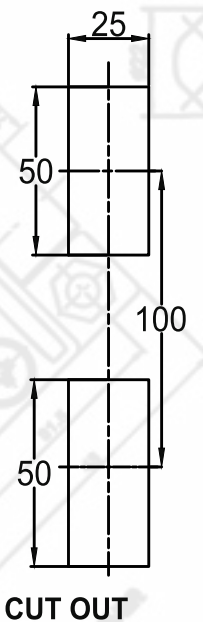
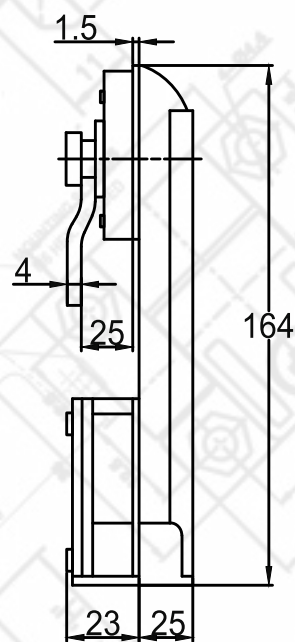
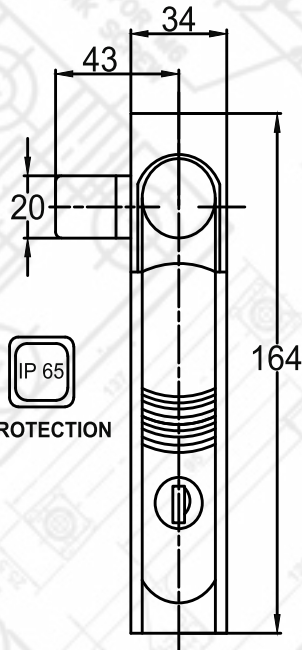
* Different Size of MS Lever available



Cam Controller Swing Handle Locks(Round Rod Type)

VLL 01

3 Point Lock Polyamide Body



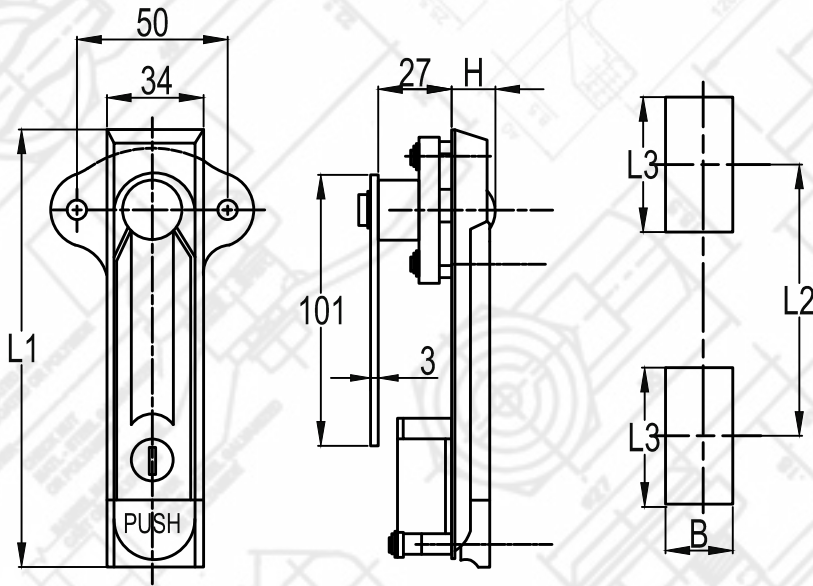
Cam Controller Swing Handle Locks(Round Rod Type)

VLL 02

3 Point Lock Polyamide with Key

VLL 02 B

3 Point Lock Polyamide with Key Big Body



PART NO.	L1	L2	L3	B	H
MS 743-1-1	162	100	50	25	16
MS 743-2-1	136	74	50	25	18

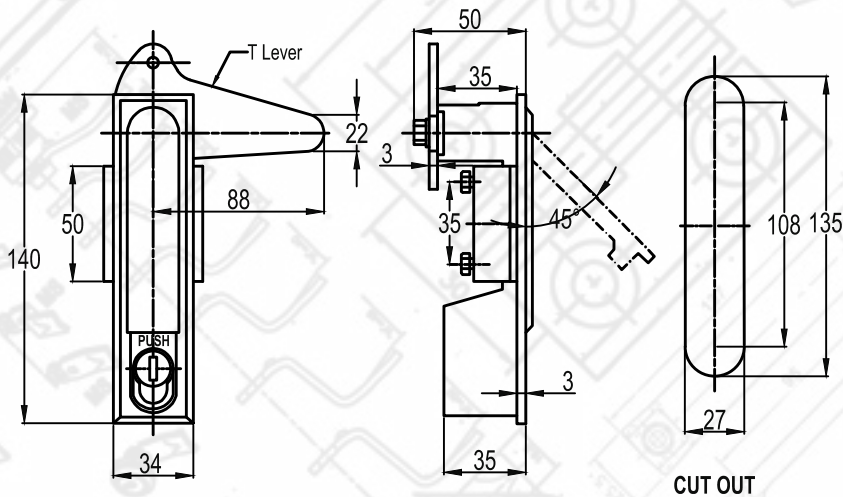


Cam Controller Swing Handle Locks(Round Rod Type)

MS 743-1-1

Cam Controller Swing Handle 3 Point Lock

Push to unlock

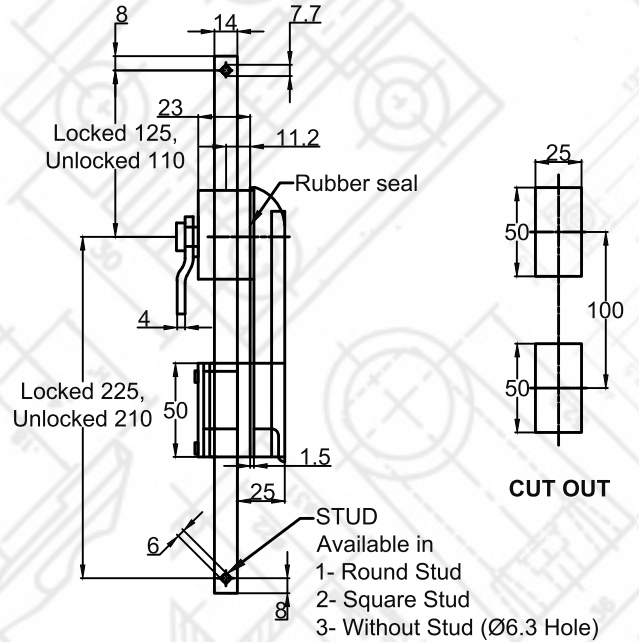
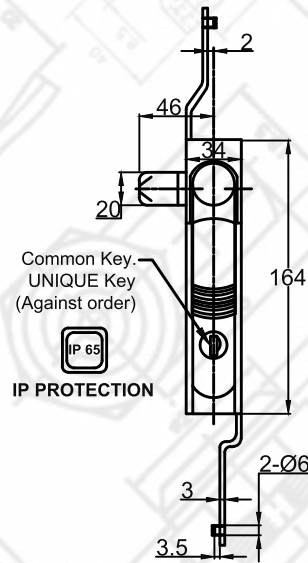


Cam Controller Swing Handle Locks(Round Rod Type)

MS 480-1-1

Push to Unlock 3 Point Lock

Cam Controller Swing Handle Lock

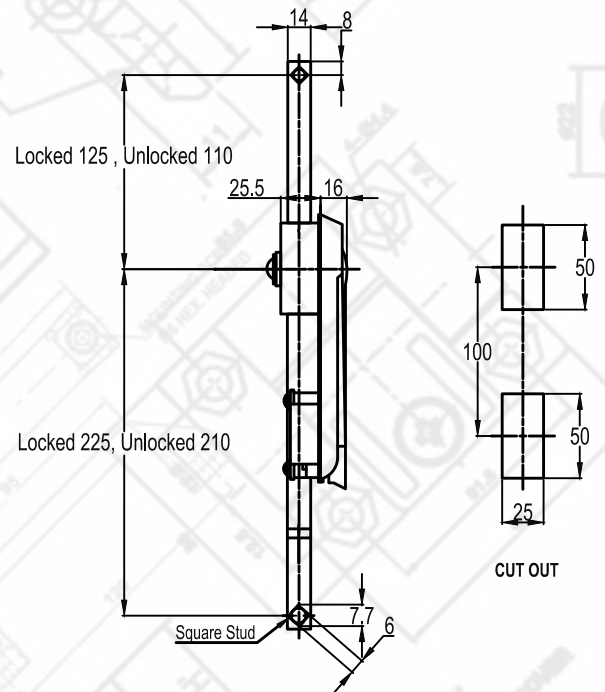
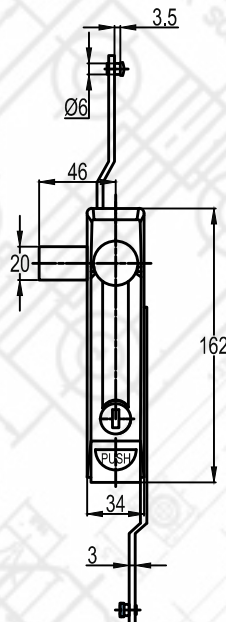

Rod Controller Swing Handle Locks(Flat Rod Type)

VLL 04

Rod Controller Swing Handle 3 Point Lock

Material

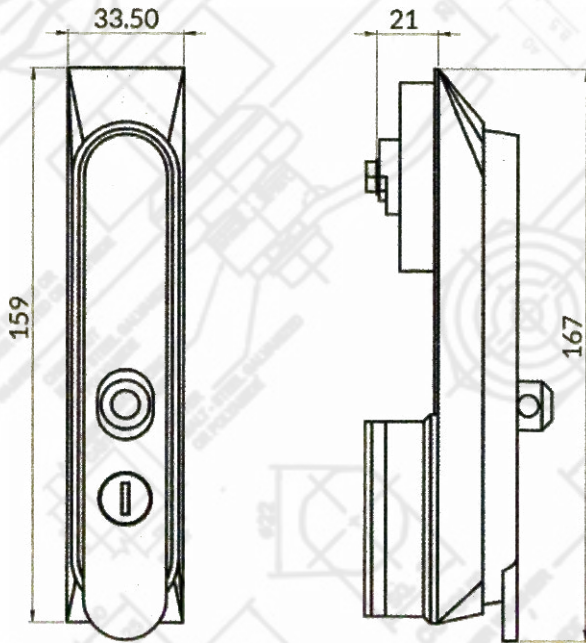
Polyamide


Rod Controller Swing Handle Locks(Flat Rod Type)

MS 741-1-1

Swing Handle with Flat Rod 3 Point Lock

Push to unlock

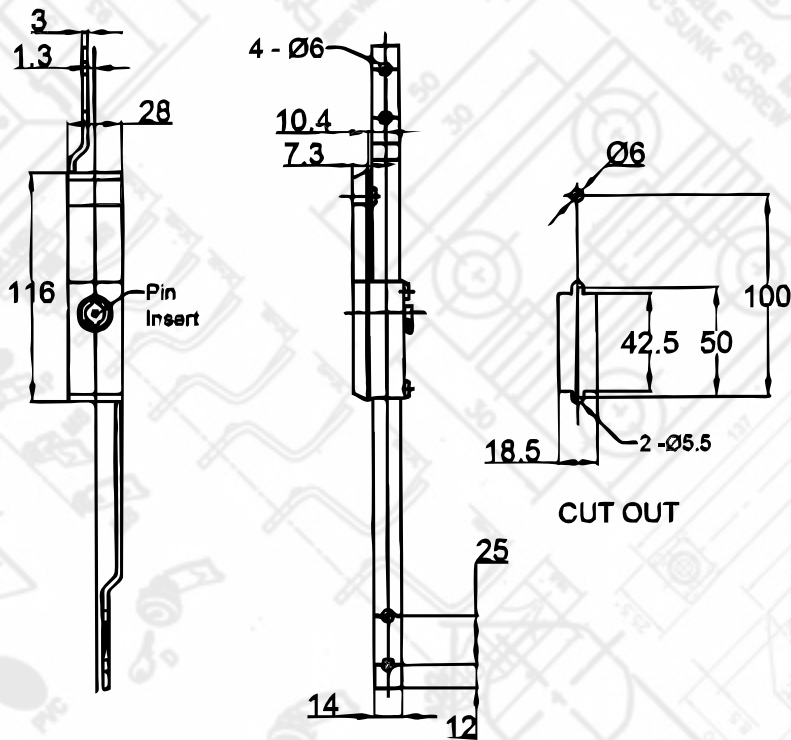


CUTOUT



Cam Controller Swing Handle Locks(Round Rod Type)

RLL 02	Pad Type 3 Point Lock	Material	Polyamide
--------	-----------------------	----------	-----------

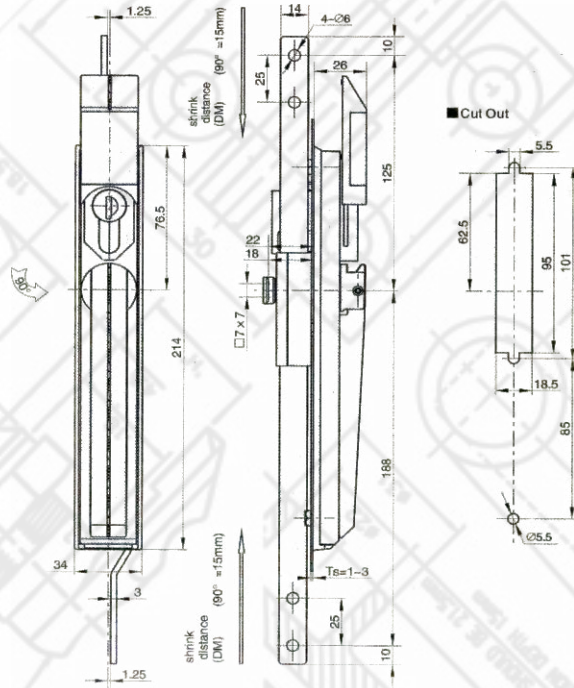


CUT OUT



Rod Controller Swing Handle Locks(Flat Rod Type)

MS 821	3 Point Lock with Key	Material	Die Cast
--------	-----------------------	----------	----------



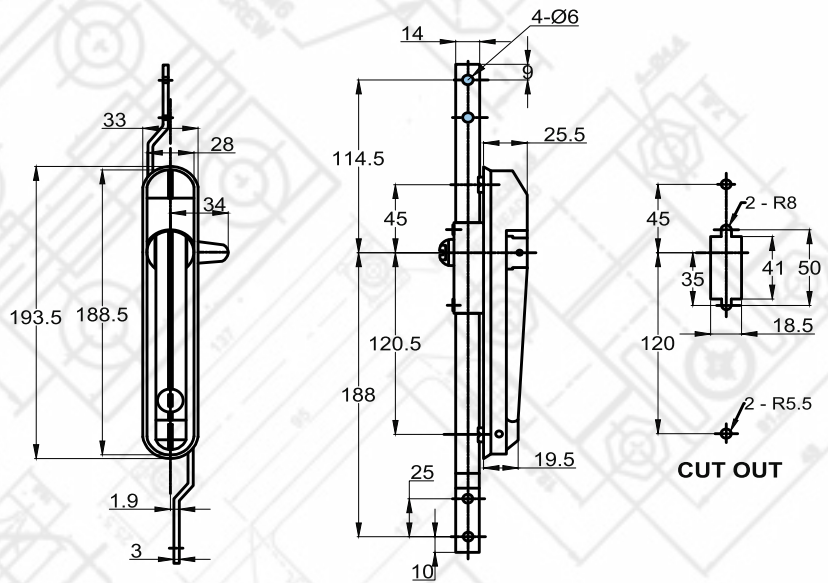
Rod Controller Swing Handle Locks(Flat Rod Type)

MS 4086 Z

Rod Controller Swing Handle 3 Point Lock

Material

Die Cast



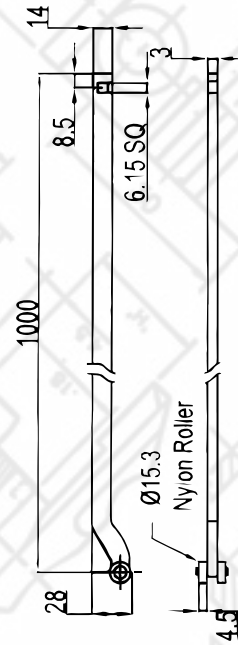
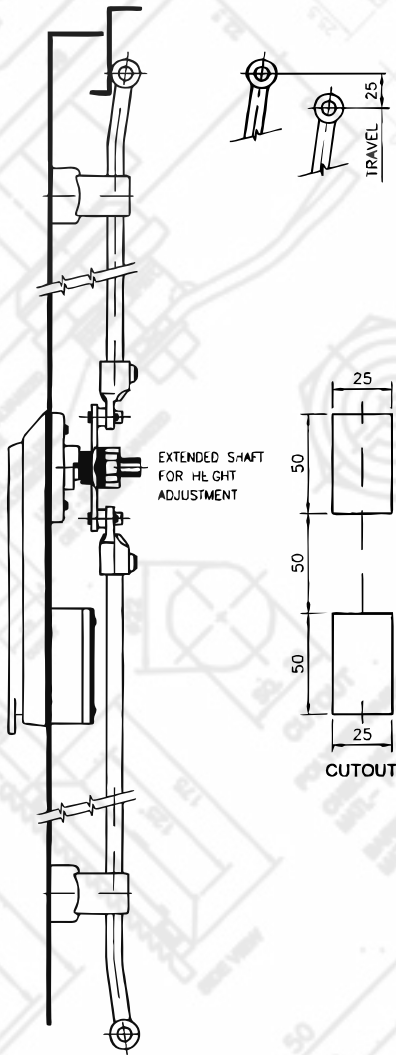
Rod Controller Swing Handle Locks(Flat Rod Type)

MS 484-1-1

Rod Controller Swing Handle 3 Point Lock

Material

Die Cast



RLL 015

Flat Rod



FLAT ROD SUPPORT



ROUND ROD SUPPORT



LEVER



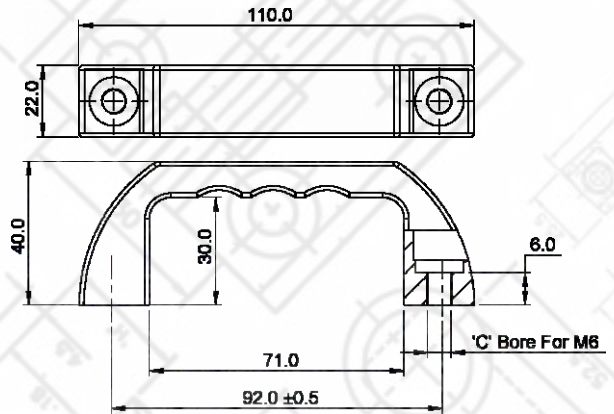
ROD SUPPORT HOOK



ROUND ROD



WHEEL FOR ROUND ROD

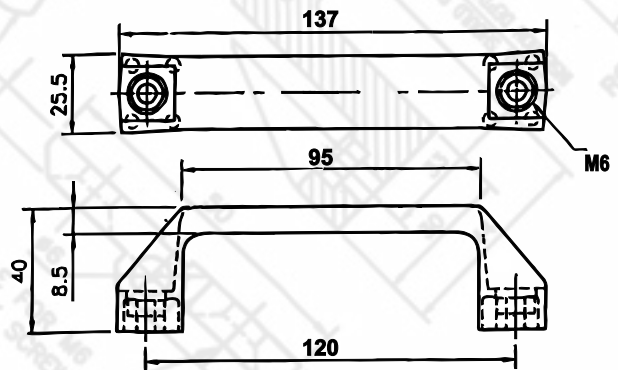
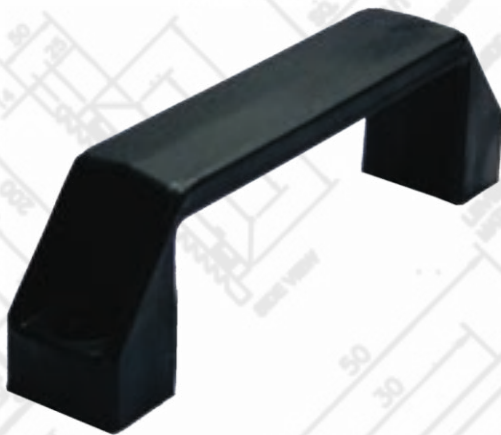


RHP 09

92 mm Hole Center

Material

Polyamide

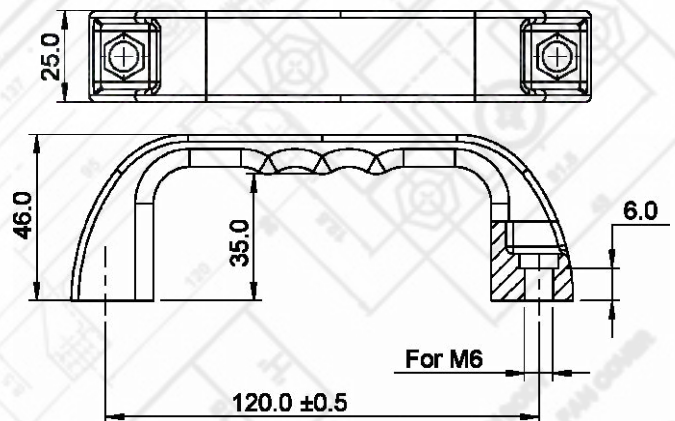


RHP 03

120 mm Hole Center

Material

Polyamide

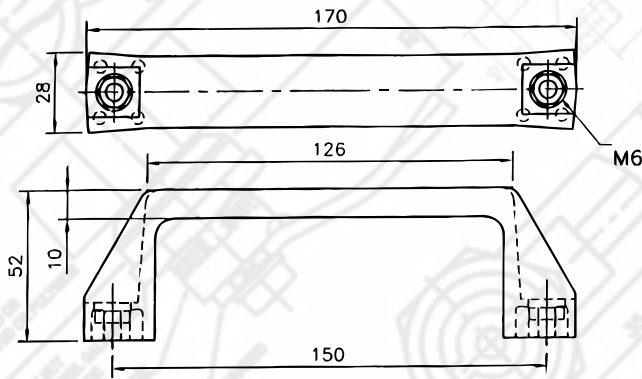


RHP 11

120 mm Hole Center

Material

Polyamide

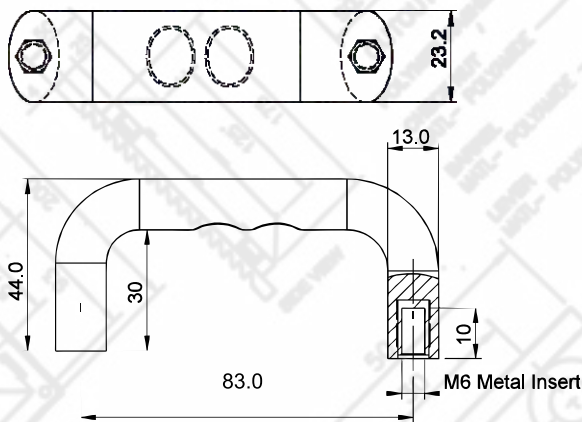


RHP 04

150 mm Hole Center

Material

Polyamide

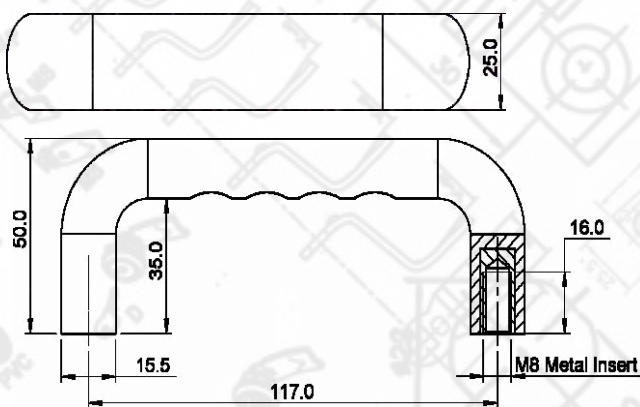


RHP 07

83 mm Hole Center

Material

Polyamide Handle Brass Insert

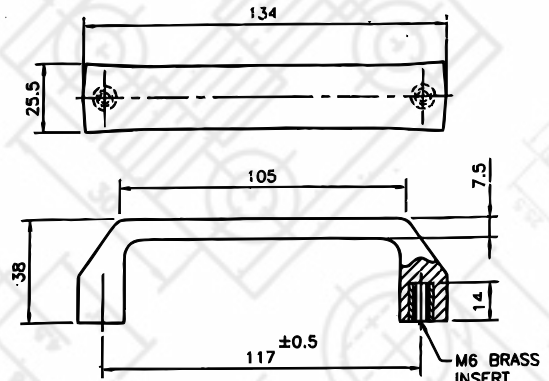


RHP 10

117 mm Hole Center

Material

Polyamide Handle Brass Insert

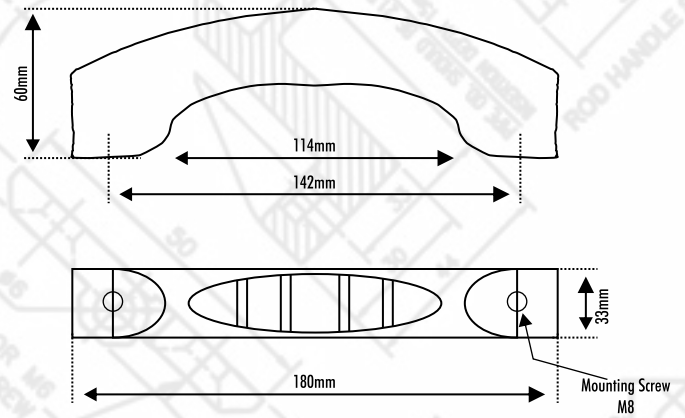


RHP 08

117 mm Hole Center

Material

Polyamide Handle Brass Insert

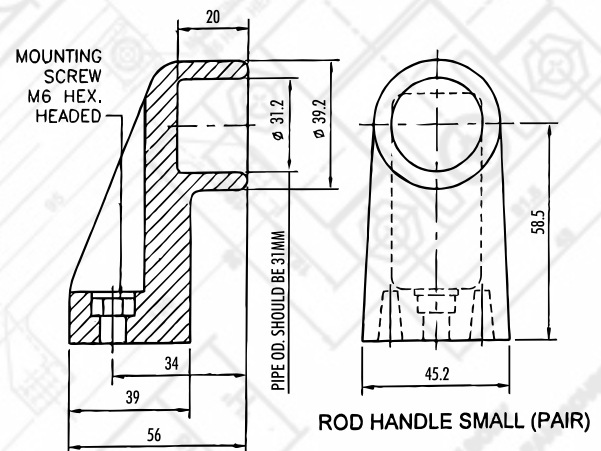


RHP 12

142 mm Hole Center

Material

Polyamide

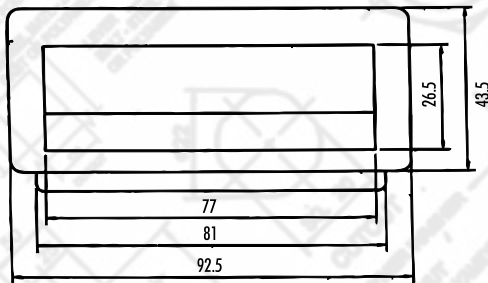
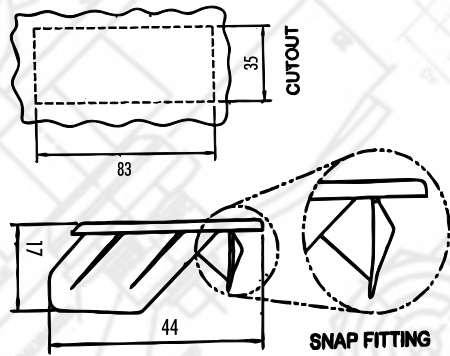


RHP 05

Support with Pipe

RHP 06

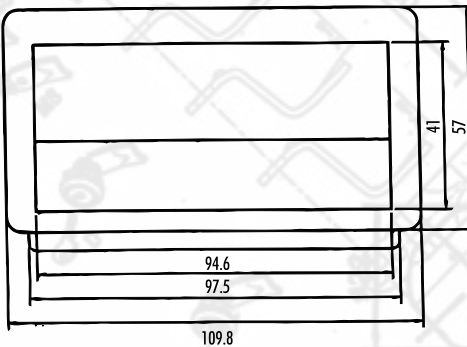
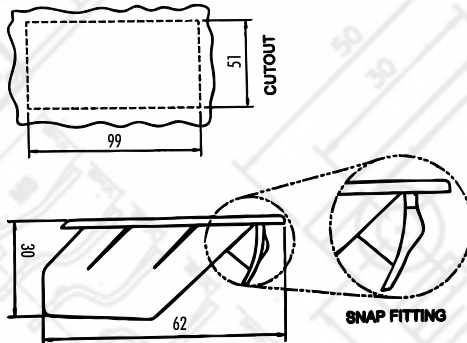
Support Only



RHP 01

Pocket Handle - Small - with 1 lock & 3 lock

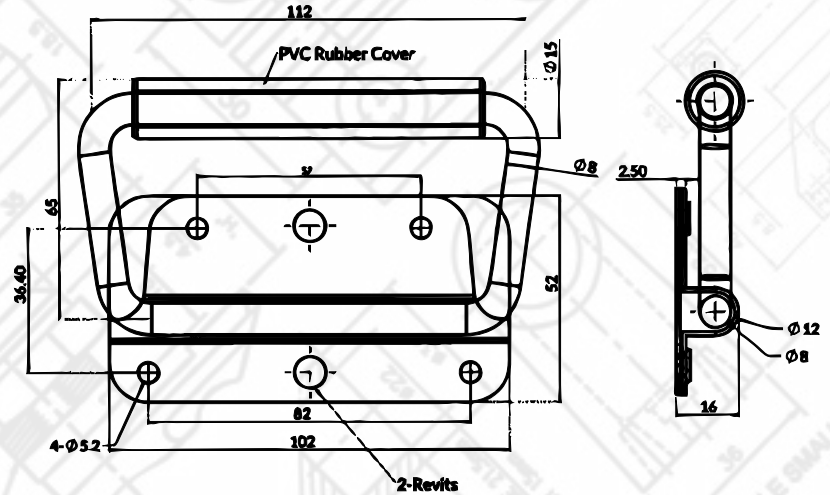
Polyamide



RHP 02

Pocket Handle - Big

Polyamide

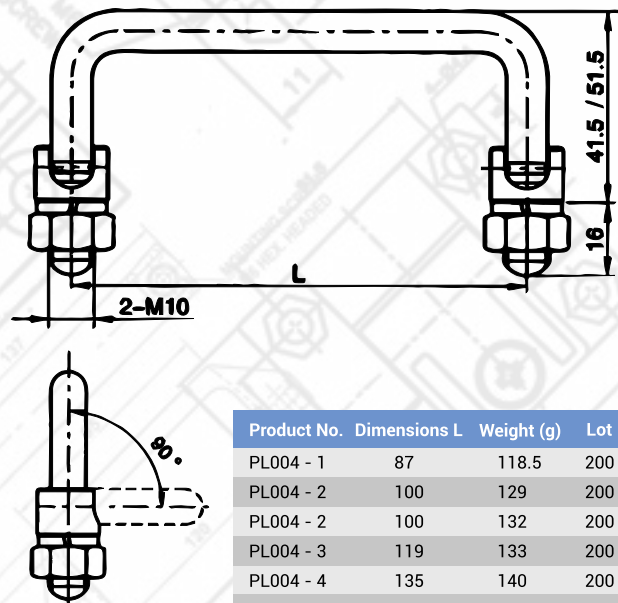


RHP 39

Swing Handle

Material

MS / SS



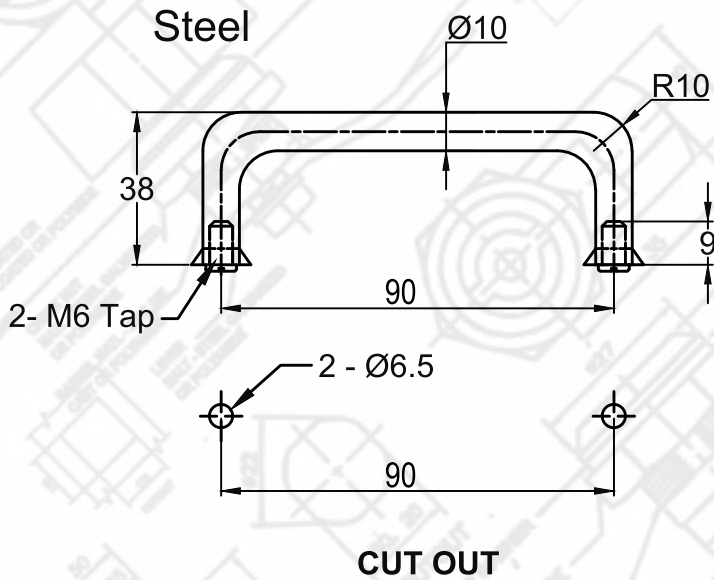
Product No.	Dimensions L	Weight (g)	Lot
PL004 - 1	87	118.5	200
PL004 - 2	100	129	200
PL004 - 2	100	132	200
PL004 - 3	119	133	200
PL004 - 4	135	140	200
PL004 - 5	149	147	200

PL 004

Adjustable Handle

Material

MS

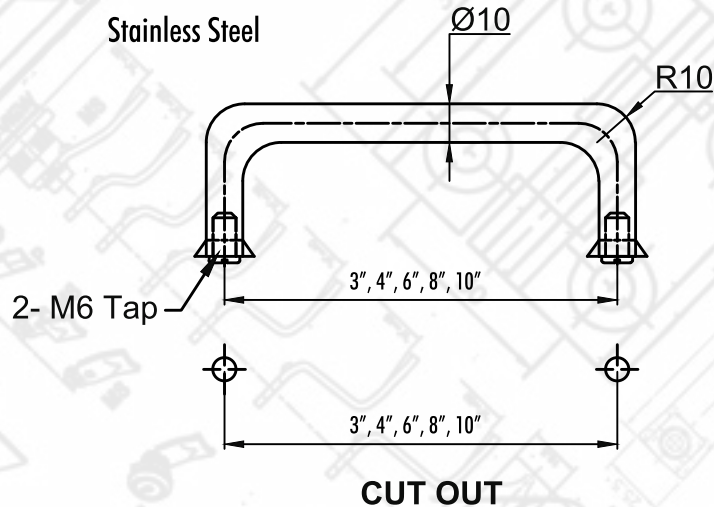


RHM 90

MS Door Handle

Material

MS



RHM SS

SS DOOR HANDLE

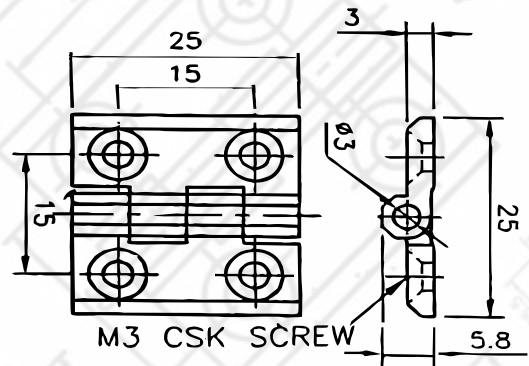
Material

Stainless Steel


+91 83065 20468
+91 83066 20468

info@verixengineers.com
sales@verixengineers.com

www.ravi-enterprise.com
www.verixengineers.com

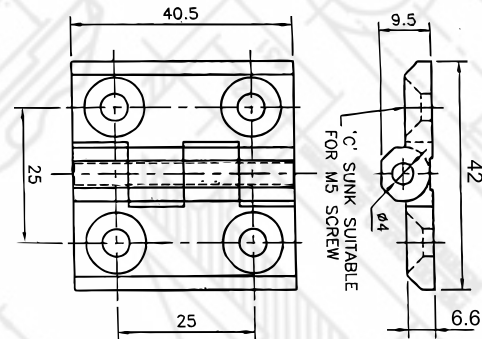


RHI 37

25 X 25 mm

Material

Polyamide - Nylon Hinges

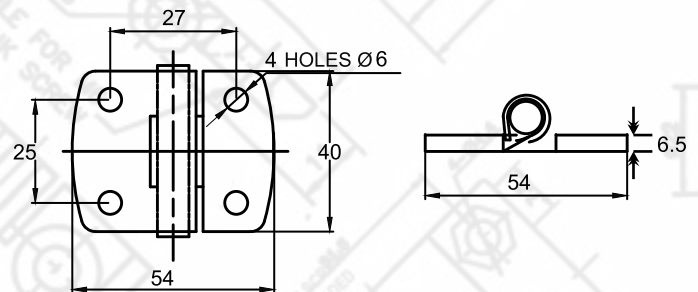
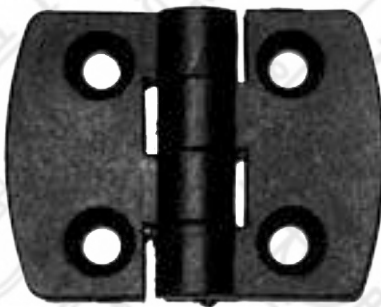


RHI 35

40 x 40 mm

Material

Polyamide - Nylon Hinges

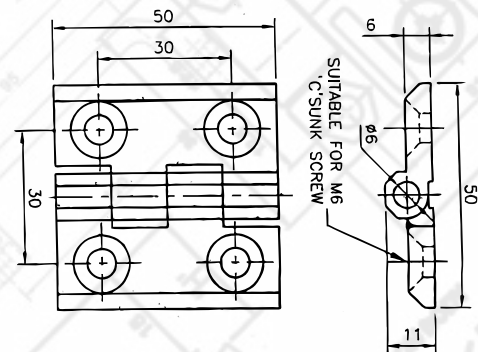


RHI 35 R

40 x 54 mm Round

Material

Polyamide - Nylon Hinges

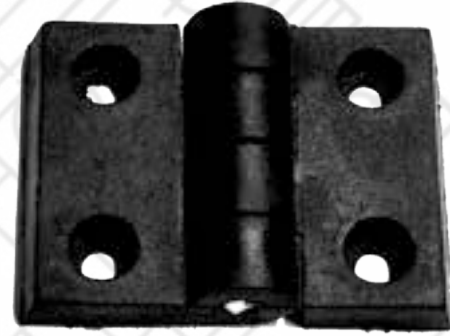
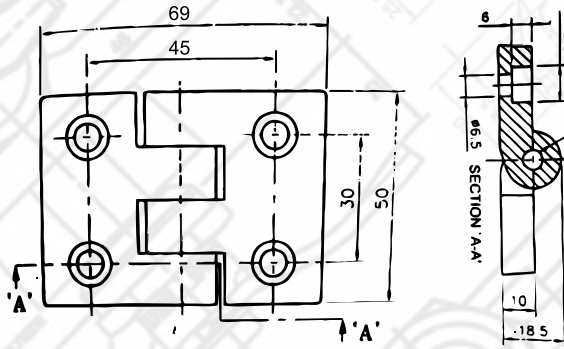
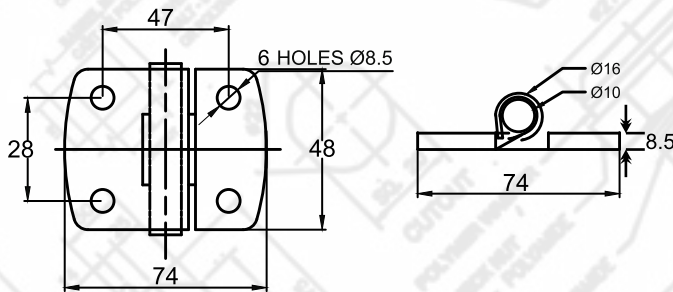
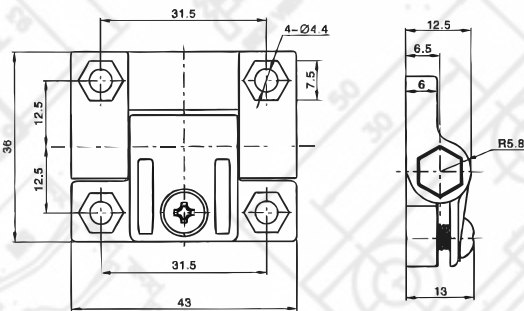
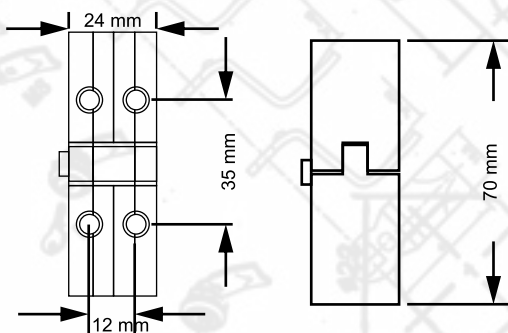


RHI 36

50 x 50 mm

Material

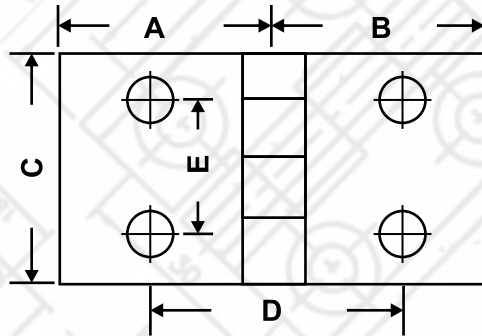
Polyamide - Nylon Hinges


RHI 63
50 x 69 mm
Material
Polyamide - Nylon Hinges

RHI 64
48 x 74 mm
Material
Polyamide - Nylon Hinges

RHI 62
38 x 42 mm (Nut + Bolt)
Material
Polyamide - Nylon Hinges

RHI 99
70 x 24 mm
Polyamide - Nylon Hinges



RHI 35 BB

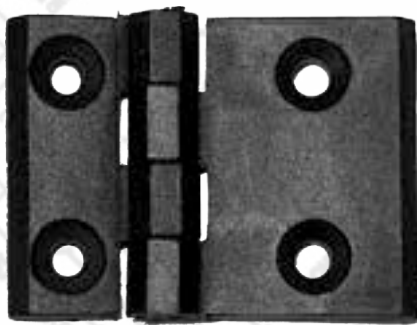
Polyamide 40 x 73 mm Hinges



RHI 36 BB

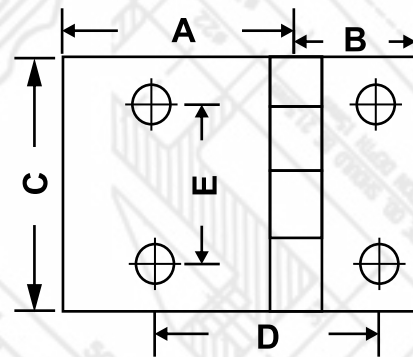
Polyamide 50 x 85 mm Hinges

	RHI 36 BB	RHI 35 BB
A	42.5	36.5
B	42.5	36.5
C	50.0	40.0
D	50.0	42.5
E	30.0	25.0



RHI 35 BS

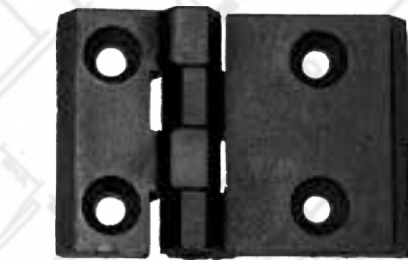
Polyamide 40 x 57 mm Hinges



RHI 36 BS

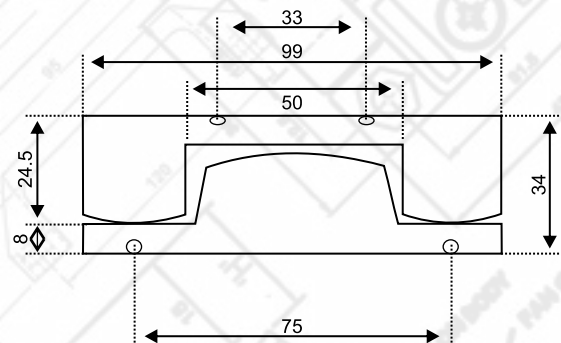
Polyamide 50 x 68 mm Hinges

	RHI 35 BS	RHI 36 BS
A	36.5	42.5
B	21.5	25.0
C	40.0	50.0
D	33.5	41.0
E	25.0	30.0

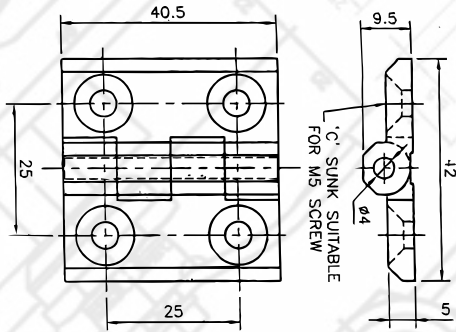
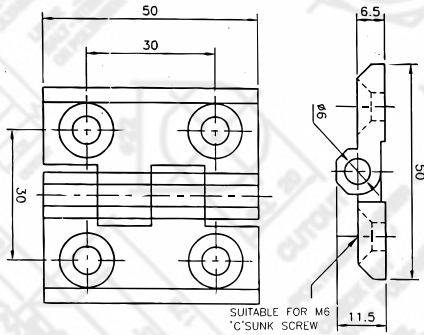
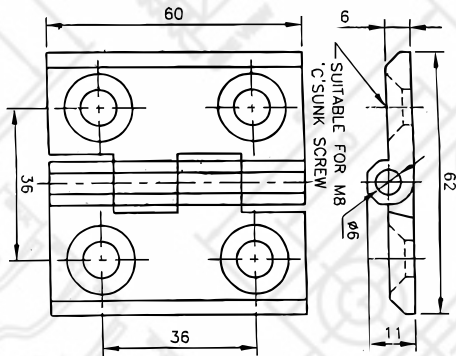
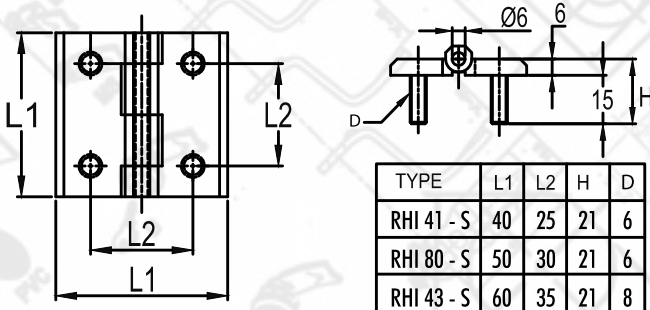


RHI 84

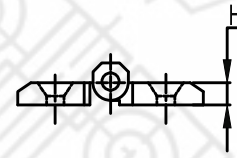
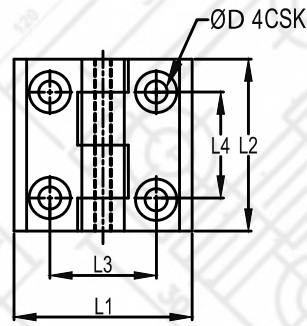
34 x 99 mm



Polyamide - Nylon Hinges


RHI 41
40 x 40 mm
Material
Zinc Die - Cast Hinges

RHI 80
50 x 50 mm
Material
Zinc Die - Cast Hinges

RHI 43
60 x 60 mm
Material
Zinc Die - Cast Hinges

RHI 41 - S
40 x 40 mm Die Cast with Stud Hinge
RHI 80 - S
50 x 50 mm Die Cast with Stud
RHI 43 - S
60 x 60 mm Die Cast with Stud

PANEL LOCK
LOCK ACCESSORIES
3 POINT LOCK
PANEL HANDLES
PANEL HINGES
AIR-VENT FAN FILTERS
DRAW CHAIN
KNOB
BUS-BAR
GROMMET
PVC YELLOW FERRULE
Wire ACCESSORIES
OTHER ACCESSORIES

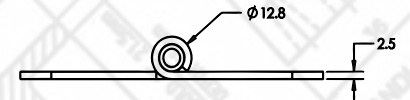
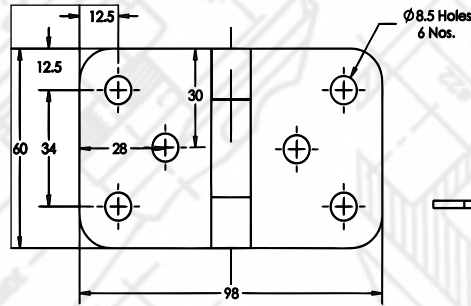


TYPE	L1	L2	L3	L4	H	ØD
60x60	60	60	36	36	8	8.5
50x50	50	50	30	30	6	6.2
40x40	40	40	25	25	5	5.2

Available in Stainless Steel

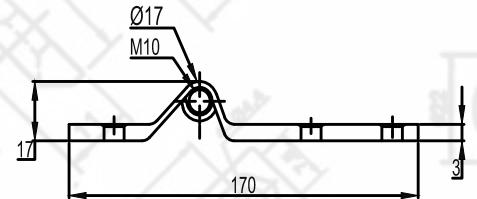
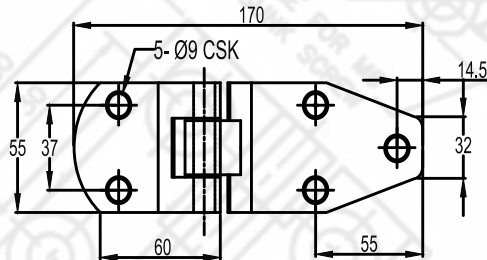
RHN 40	40 x 40 mm Stainless Steel - 304
RHN 50	50 x 50 mm Stainless Steel - 304

RHN 60	60 x 60 Stainless Steel - 304
--------	-------------------------------



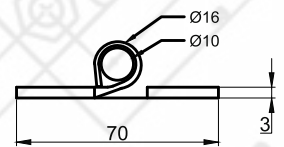
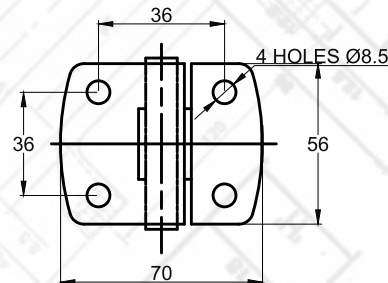
HN-038 BIG	98 x 60 mm
------------	------------

Material	Stainless Steel
----------	-----------------



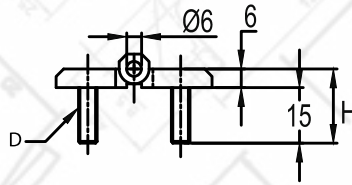
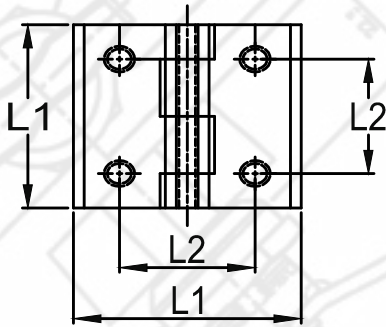
HN-019 SS	170 x 55 mm Stainless Steel
-----------	-----------------------------

HN-019 B	MS - Black Powder Coated
----------	--------------------------



HN-038 SMALL	70 X 36 mm
--------------	------------

Material	Stainless Steel
----------	-----------------



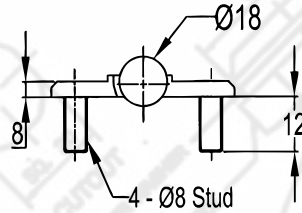
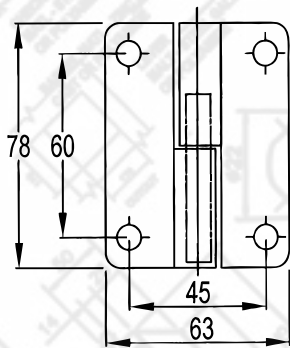
TYPE	L1	L2	H	D
RHI 36 - S	50	30	21	6


RHI 36 - STUD

50 x 50 mm with Stud

Material

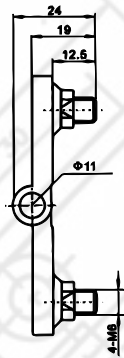
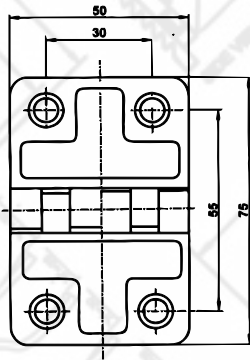
Polyamide - Nylon Hinges


RHI K 01-LH

Zinc Die Cast Hinges (78 x 63 mm)

RHI K 01-RH

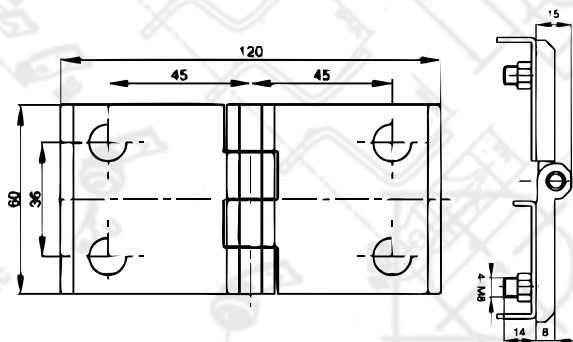
Zinc Die Cast Hinges


CL 214 - 1 A

Small Hinges with Stud (50 x 75 mm)

Material

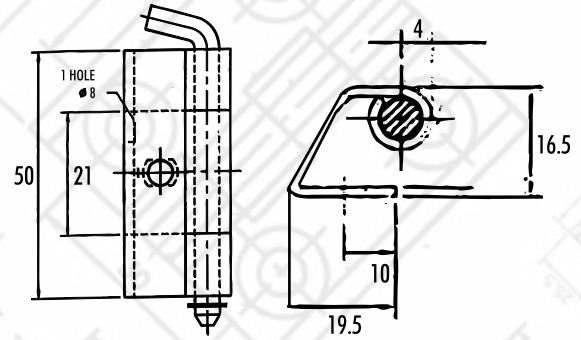
Zinc Die Cast Hinges


CL 215 - 1 A

Big Hinges with Stud (60 x 120 mm)

Material

Zinc Die Cast Hinges

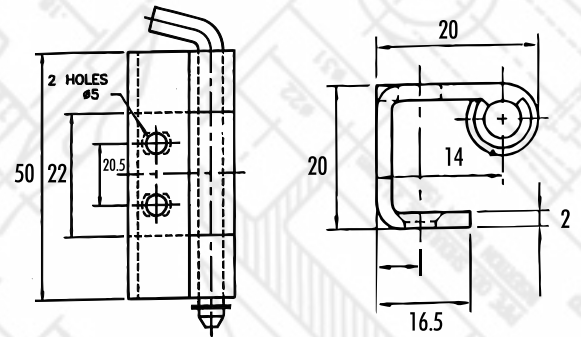


RHI 11

One Hall Hinge - 50mm

Material

MS - Steel

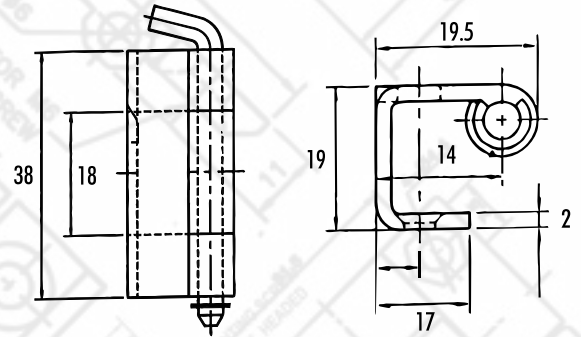


RHI 12

Two Hall Hinge - 50mm

Material

MS - Steel

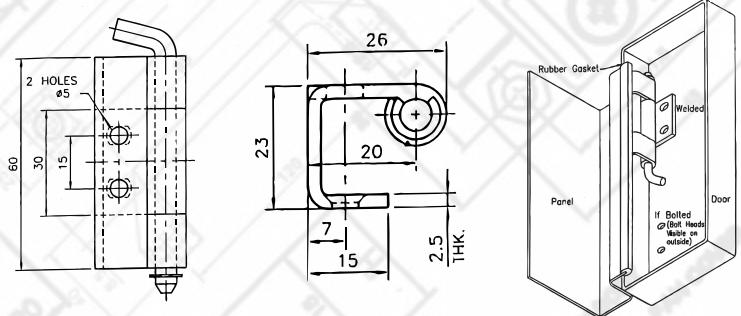


RHI 13

40mm Hinge

Material

MS - Steel

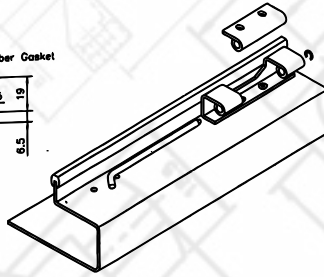
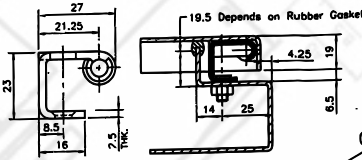
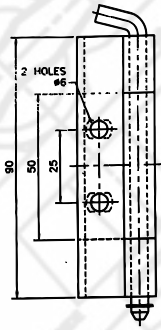


RHI 24

Concealed Hinge - 60 mm

Material

MS - Steel



RHI 25

Concealed Hinge - 90 mm

MS - Steel

PANEL LOCK

LOCK
ACCESSORIES

3 POINT LOCK

PANEL HANDLES

PANEL HINGES

AIR-VENT
FAN FILTERS

DRAG CHAIN

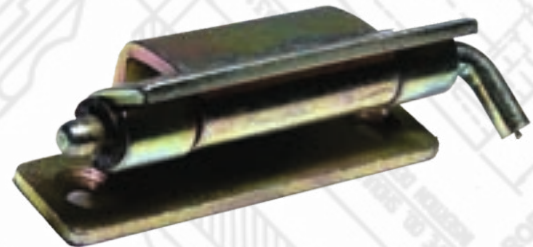
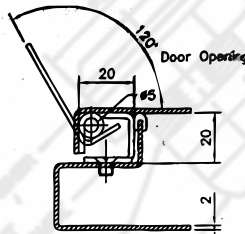
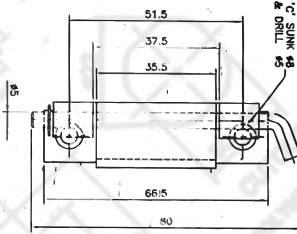
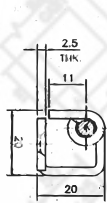
KNOB

BUS-BAR

GROMMET

PVC YELLOW
FERRULE

Wire
ACCESSORIES

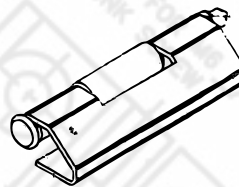
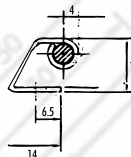
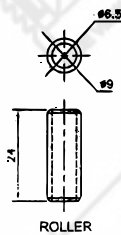
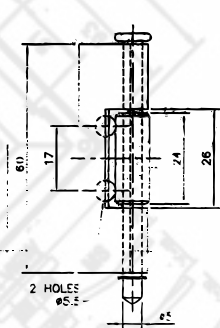
OTHER
ACCESSORIES


RHI 28

Concealed Hinge 80 mm

Material

MS - Steel

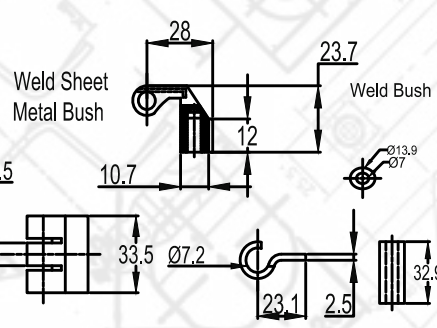
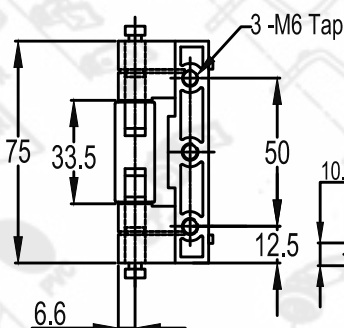


RHI 29

Concealed Hinge - 60 x 15 mm

Material

MS - Steel



RHI 77

Rittal Hinge

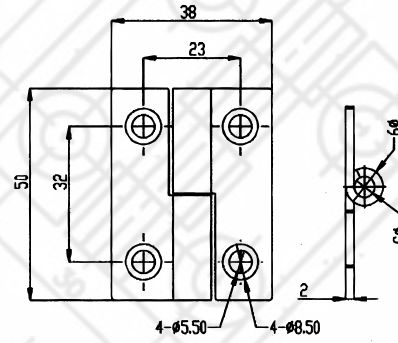
Material

Zinc Die Cast - Powder Coated


+91 83065 20468
+91 83066 20468

info@verixengineers.com
sales@verixengineers.com

www.ravi-enterprise.com
www.verixengineers.com

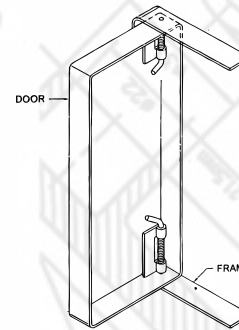
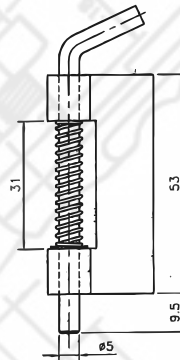


HN 35

Sheet Metal Hinge (38 x 50 mm)

Material

MS - Steel

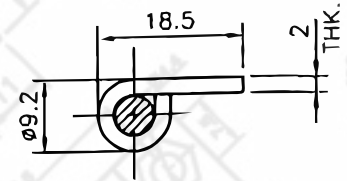
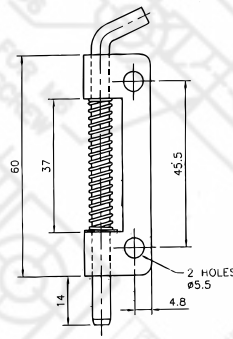


RHI 22

Spring Type Hinge

Material

MS - Steel



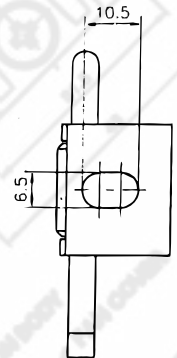
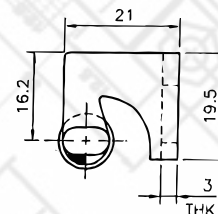
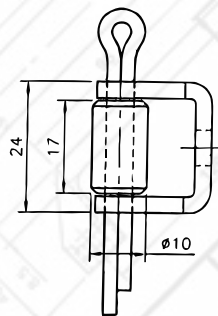
RHI 21

RHI 23

Spring Type Hinge with Hole

Material

MS - Steel

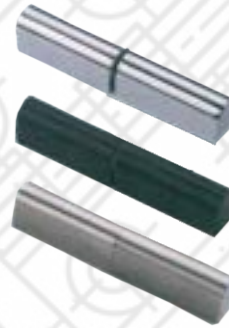


RHI 16

Pin type Hinge MS

RHI 16 S

Pin type Hinge SS



Technical drawing of a mechanical part, likely a valve or connector, showing a side view and two section views (A-A and B-B).

Side View Dimensions:

- Overall length: 89
- Overall width: 36.6
- Flange diameter: $\varnothing 5$
- Flange thickness: 4.5
- Internal hole diameter: 15
- Internal hole length: 4.5
- Internal hole offset from left end: 15
- Internal hole offset from right end: 15
- Internal hole diameter: 19.5
- Internal hole length: 22.8
- Internal hole offset from left end: 15
- Internal hole offset from right end: 15


Section View A-A Dimensions:

- Overall width: 36.6
- Internal hole diameter: 19.5
- Internal hole length: 22.8
- Internal hole offset from left end: 15
- Internal hole offset from right end: 15

Section View B-B Dimensions:

- Overall width: 36.6
- Internal hole diameter: 19.5
- Internal hole length: 22.8
- Internal hole offset from left end: 15
- Internal hole offset from right end: 15



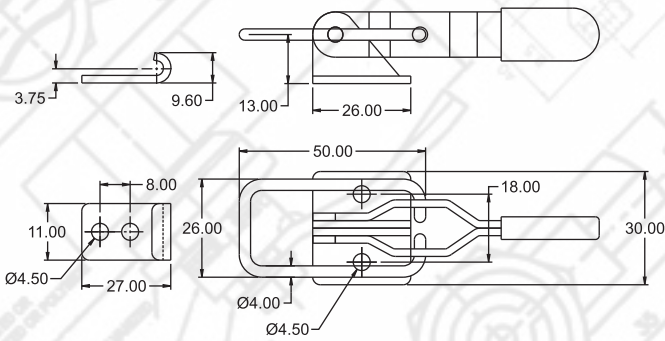
 www.ravi-enterprise.com
www.verixengineers.com

Zinc Die Cast Hinges

Zinc Die Cast

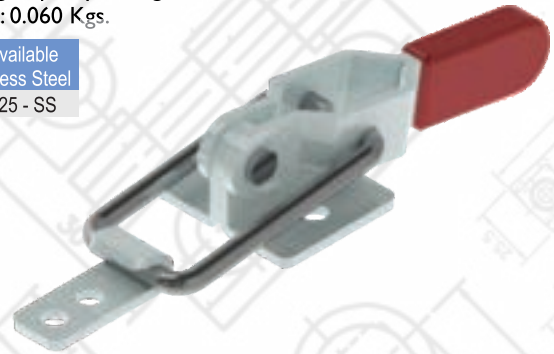
Polyamide

Polyamide Hinge



Holding Capacity: 50 Kgs.
Weight: 0.060 Kgs.

Also Available
in Stainless Steel
PA - 325 - SS

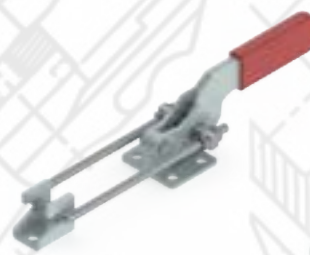
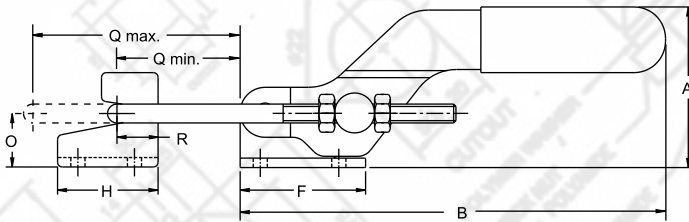


MS 325

Toggle Clamp

Material

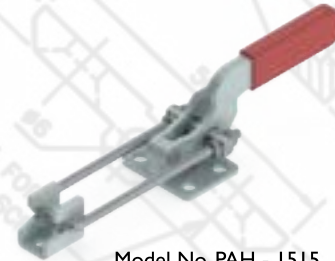
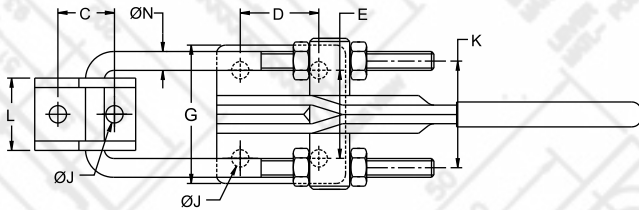
MS / SS



Model No. PAH - 1210



Model No. PAH - 1725



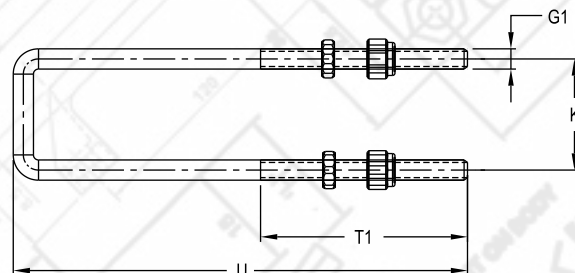
Model No. PAH - 1515

Also Available
in Stainless Steel
PAH - 1210 - SS
PAH - 1515 - SS
PAH - 1725 - SS

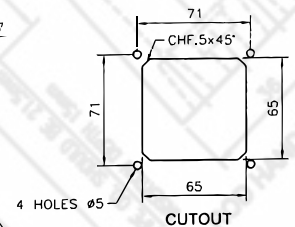
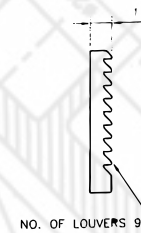
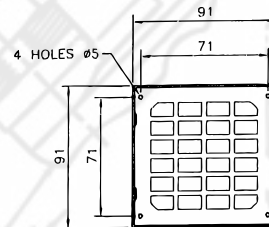
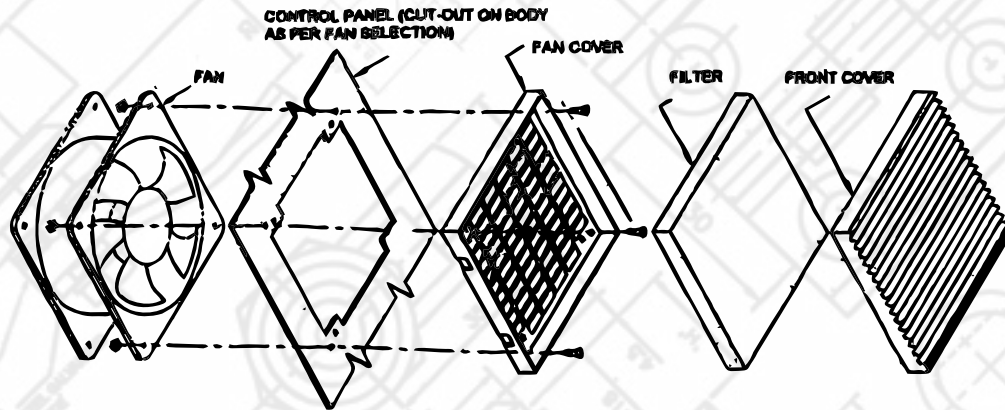
Model No.	Holding Capacity	Weight	Drawing Movement	Dimensions															
				A	B	C	D	E	F	G	H	ØJ	K	L	ØN	O	Q Min	Q Max	R
PAH - 1210	100 Kgs	0.100	46.0	32	96	11	16	20	26	30	20	4.5	21	15	4	12	23.0	56.0	9
PAH - 1515	200 Kgs	0.220	44.0	45	123	11	20	32	35	45	25	6.5	28	19	5	15	38.0	70.0	13
PAH - 1725	350 Kgs	0.350	50.0	52	148	18	25	28	40	45	33.5	6.5	33	23	6	16.5	40	76.0	16.5

Optional U-Bolt Configuration
Use the below number for additional long U-Bolts

Model No	U Bolt Part Number	SS - U Bolt Part Number	U	T1	G1	K
PAH - 1210	M49045	M49045 - SS	90	45	M4	21
PAH - 1210 - M25	M411545	M411545 - SS	115			
PAH - 1515	M511045	M511045 - SS	110			
PAH - 1515 - M25	M513545	M513545 - SS	135	45	M5	28
PAH - 1515 - M50	M516045	M516045 - SS	160			
PAH - 1725	M613055	M613055 - SS	130			
PAH - 1725 - M25	M615555	M615555 - SS	155	55	M6	33
PAH - 1725 - M50	M618055	M618055 - SS	180			



ASSEMBLY OF AIR VENTS / FAN FILTER

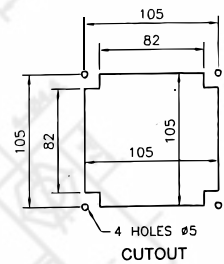
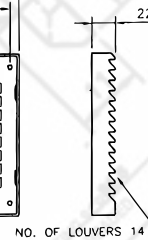
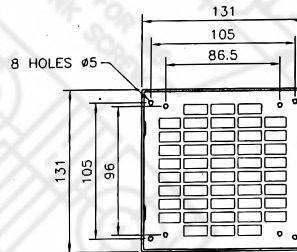


3 inch Box

80 mm x 80 mm Box Type

RAV 080

ABS

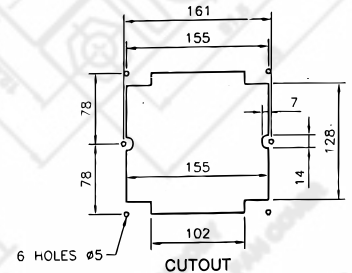
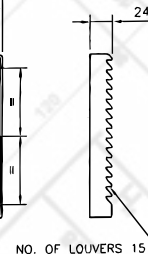
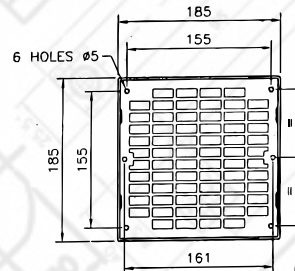
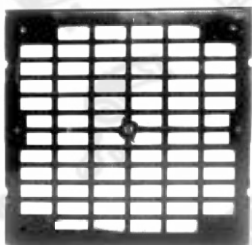


4 inch -Box

130 mm x 130 mm Box Type

RAV 130

ABS

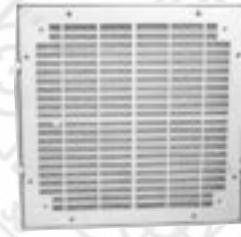
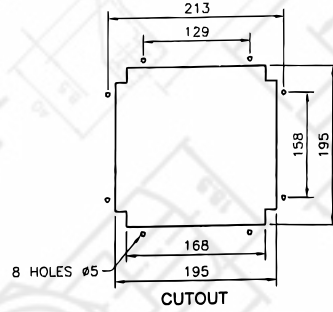
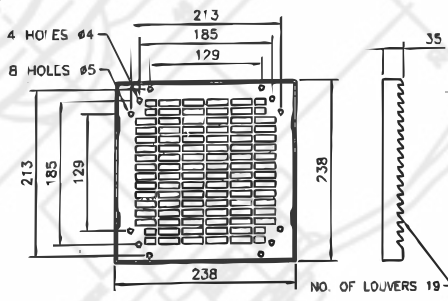


6 inch - Box

184 mm x 84 mm Box Type

RAV 184

ABS



PANEL LOCK

LOCK

ACCESSORIES
3 POINT LOCK

PANEL HANDLES

PANEL HINGES

AIR-VENT
FAN FILTERS

DRAG CHAIN

KNOB

BUS-BAR

GROMMET

PVC YELLOW
FERRULE

Wire
ACCESSORIES

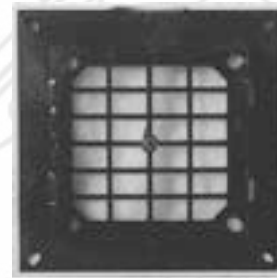
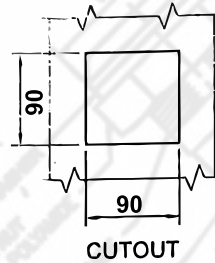
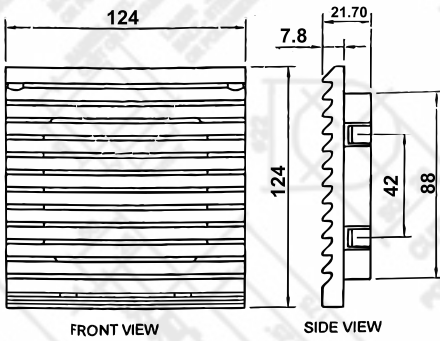
OTHER
ACCESSORIES

8 inch - Box

238 mm x 238 mm Box

RAV 238

ABS

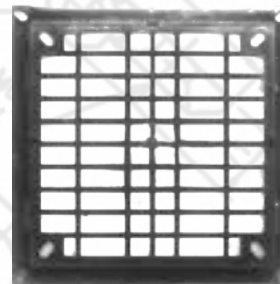
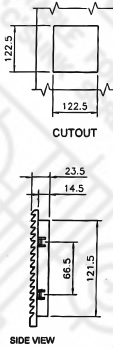
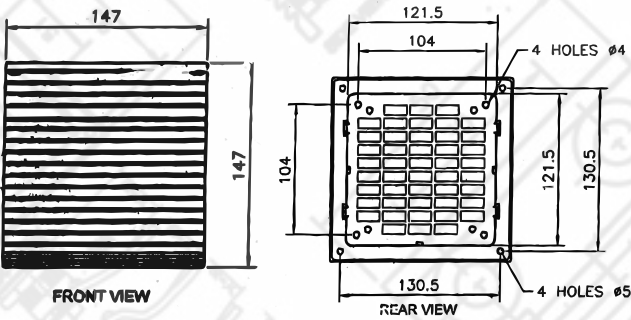


3 inch - Snap

80 mm x 80 mm Snap

RAV 080S

ABS

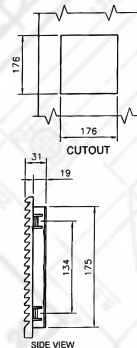
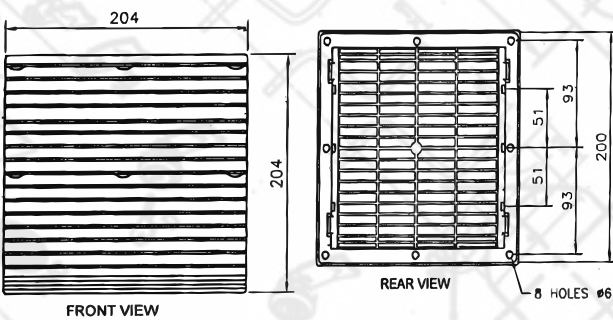


4 inch - Snap

147 mm x 147 mm Snap

RAV 147

ABS

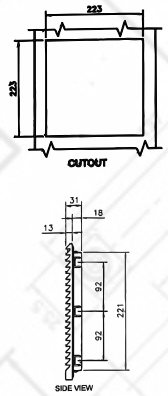
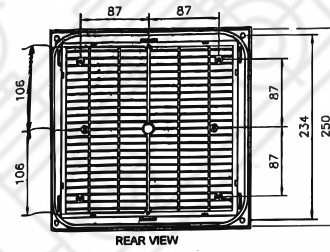
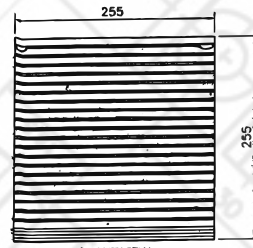


6 inch - Snap

203 mm x 203 mm Snap

RAV 203

ABS

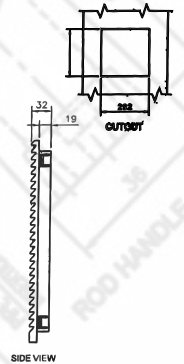
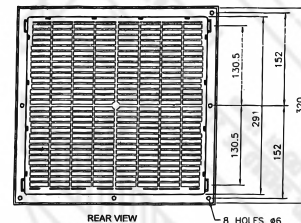
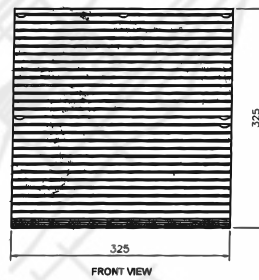


8 inch - Snap

252 mm x 252 mm Snap

RAV 255

ABS

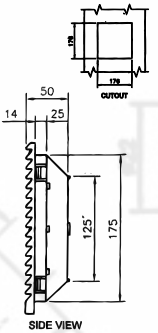
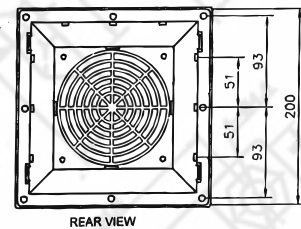
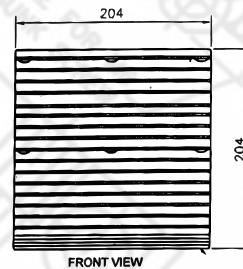


12 inch - Snap

325 mm x 325 mm Snap

RAV 325

ABS

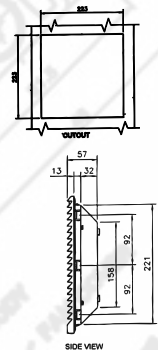
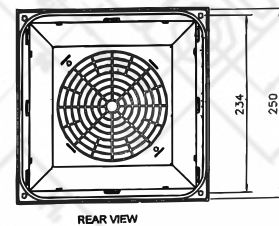
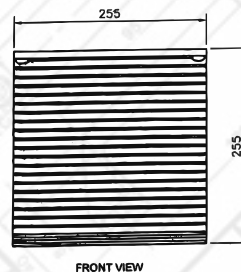
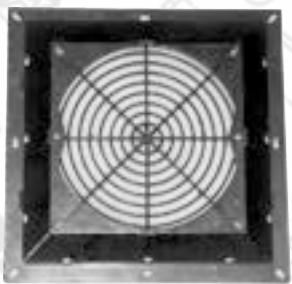


6 inch - Dom

203 mm x 203 mm Snap with Dom

RAV 203 D

ABS



8 inch - Dom

252 mm x 252 mm Snap with Dom

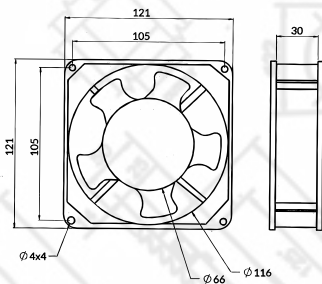
RAV 252 D

ABS

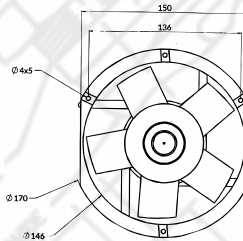


We can Print Your Company Name on Airvent

FAN



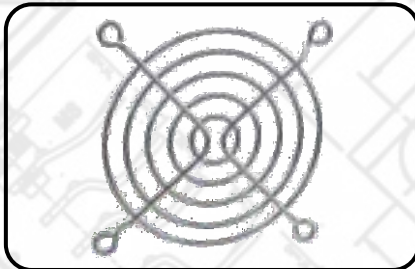
4 INCH FAN



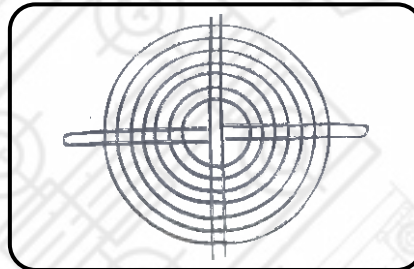
6 INCH FAN

3", 4" , 6" & 8" FAN AVAILABLE

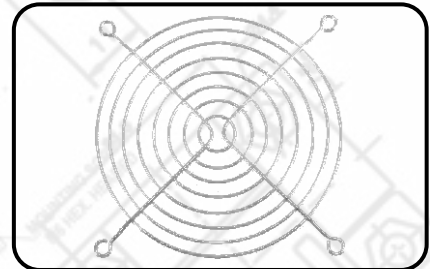
FAN GRILL



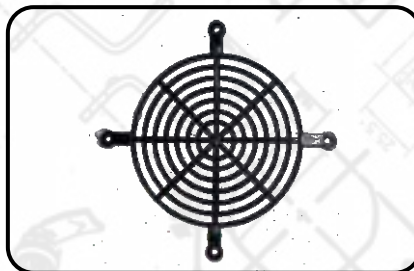
4 INCH METAL GRILL



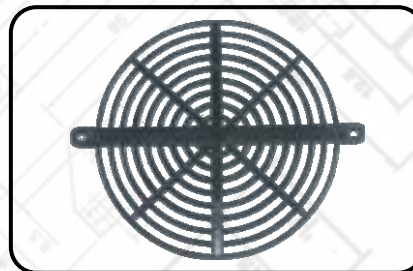
6 INCH METAL GRILL



8 INCH METAL GRILL

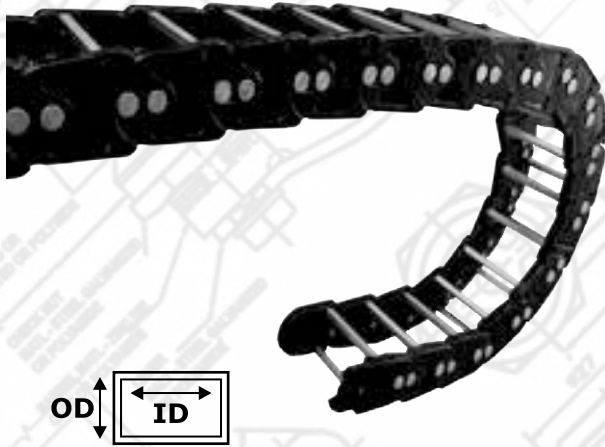


4 INCH NYLON GRILL



6 INCH NYLON GRILL

V - A SERIES DRAG CHAIN



Sr.	Code	Dimention	
		ID (mm)	OD (mm)
1	V-A-65	50 X 65	72 X 110
2	V-A-75	50 X 75	72 X 123
3	V-A-100	50 X 100	72 X 148
4	V-A-125	50 X 125	72 X 173
5	V-A-150	50 X 150	72 X 198
6	V-A-175	50 X 175	72 X 223
7	V-A-200	50 X 200	72 X 248
8	V-A-250	50 X 250	72 X 298
9	V-A-300	50 X 300	72 X 330

Note= Drag chain length modifications can be possible.

V - A Series Bending Radius - 192.5 mm

V - AC SERIES COVER TYPE DRAG CHAIN



Sr.	Code	Dimention	
		ID (mm)	OD (mm)
1	V-AC-65	50 X 65	72 X 110
2	V-AC-75	50 X 75	72 X 123
3	V-AC-100	50 X 100	72 X 148
4	V-AC-125	50 X 125	72 X 173
5	V-AC-150	50 X 150	72 X 198

Note= Drag chain length modifications can be possible.

V - AC Series Bending Radius - 192.5 mm

V - B SERIES DRAG CHAIN



Sr.	Code	Dimention	
		ID (mm)	OD (mm)
1	V-B-50	35 X 50	50 X 90
2	V-B-75	30 X 75	50 X 95
3	V-B-100	30 X 100	50 X 115
4	V-B-125	30 X 125	50 X 140
5	V-B-150	30 X 150	50 X 165
6	V-B-175	30 X 175	50 X 190

Note= Drag chain length modifications can be possible.

V - B Series Bending Radius - 150 mm

V - BC SERIES COVER TYPE DRAG CHAIN

Sr.	Code	Dimention	
		ID (mm)	OD (mm)
1	V-BC-50	35 X 50	50 X 90
2	V-BC-75	30 X 75	50 X 95
3	V-BC-100	30 X 100	50 X 115
4	V-BC-125	30 X 125	50 X 140
5	V-BC-150	30 X 150	50 X 165

Note= Drag chain length modifications can be possible.

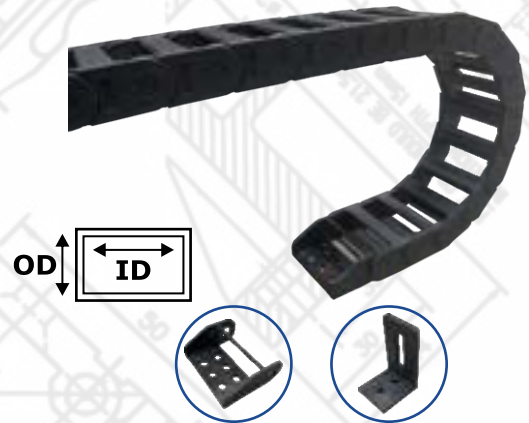
V - BC Series Bending Radius - 150 mm



V - C SERIES DRAG CHAIN

Sr.	Code	Dimention		Bending Radius
		ID (mm)	OD (mm)	
1	V-C-15	15 X 12	23 X 15	35
2	V-C-35	25 X 35	35 X 45	102
3	V-C-75	25 X 75	35 X 90	118

V - C Series end Clamps Available



V - D SERIES DRAG CHAIN

Sr.	Code	Dimention	
		ID (mm)	OD (mm)
1	V-D-28	22 X 28	30 X 48
2	V-D-44	22 X 44	30 X 65

V - D Series Bending Radius - 55 mm



V - E SERIES DRAG CHAIN

Sr.	Code	Dimention	
		ID (mm)	OD (mm)
1	V-E-50	55 x 50	65 x 70
2	V-E-75	55 x 75	65 x 95
3	V-E-100	55 x 100	65 x 120

V - E Series Bending Radius - 115 mm



BOLT TYPE KNOB



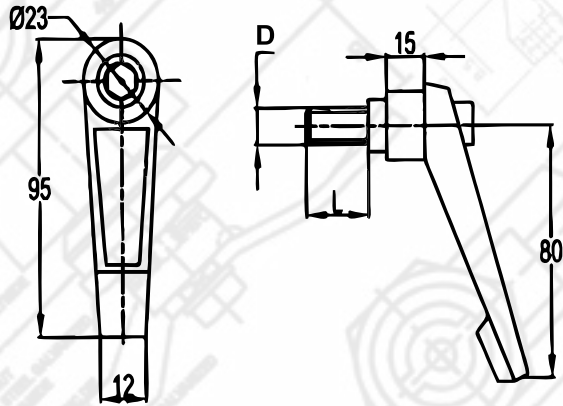
Level Pad



Sr.	Bolt Size	Length	M	N	O
1.	1/4	1"	24.4	9.1	6.1
2.	1/4	1 1/4"	24.4	9.1	6.1
3.	1/4	1 1/2"	24.4	9.1	6.1
4.	1/4	2"	24.4	9.1	6.1
5.	3/16	1"	24.4	9.1	6.1
6.	3/16	1 1/4"	24.4	9.1	6.1
7.	3/16	1 1/2"	24.4	9.1	6.1
8.	M4	25 to 50 mm	24.4	9.1	6.1
9.	M5	15 to 50 mm	24.4	9.1	6.1
10.	M6	15 mm	24.4	9.1	6.1
11.	M6	20 mm	24.4	9.1	6.1
12.	M6	25 mm	24.4	9.1	6.1
13.	M6	30 mm	24.4	9.1	6.1
14.	M6	35 mm	24.4	9.1	6.1
15.	M6	40 mm	24.4	9.1	6.1
16.	M6	50 mm	24.4	9.1	6.1
11.	M8	15 to 50 mm	34	9.1	10
12.	T Type	10 to 50 mm	40.2	10.2	9.5
13.	Level Pad 8 x 20 mm				
14.	Level Pad 3/8" x 1 1/4"				

Insert Knob

Sr.	Description	Diameter of Knob	Thread in Knob
1	Tapper Knob	40 mm	1/2", 3/8", M10, M12
2	Tapper Knob	32 mm	3/8", 5/16", M8, M10
3	Tapper Knob	25 mm	5/16", 1/4", M6, M8
4	Round Knob	50 mm	5/8", 1/2", M12, M16
5	Round Knob	40 mm	1/2", 3/8", M10, M12
6	Round Knob	32 mm	3/8", 5/16", M8, M10
7	Round Knob	25 mm	1/4", 5/16", M6, M8
8	Seven Star	40 mm	3/8", M10, M8
9	Seven Star	50 mm	5/16", 1/4", 3/8", M8, M10



Sr.	Description	D	L
1	40 x M5	M5	15 to 25 mm
2	40 x M6	M6	15 to 30 mm
3	60 X M8	M8	20 to 50 mm
4	80 X M10	M10	20 x 50 mm
5	95 X M12	M12	25 x 60 mm
6	110 X M16	M16	30 x 70 mm



WHEEL TYPE KNOB

Sr.	Center Thread	Diameter
1	10 mm	80 mm
2	10 mm	100 mm
3	12 mm	100 mm
4	12 mm	125 mm
5	16 mm	125 mm
6	18 mm	160 mm
7	20 mm	200 mm
8	26 mm	250 mm



HAND WHEEL STEERING TYPE KNOB

Sr.	Diameter
1	75 mm
2	100 mm
3	150 mm



COPPER BUS BAR



Sr.	Size	Bus Bar Length in mm
1	9 mm hole Busbar	12 x 3 x 140 mm
2	Busbar 12x5x185 mm	185
3	Busbar 12x5x225 mm	225
4	Busbar 12x5x400 mm	400
5	Busbar 30x10x1100 mm	1100
6	Busbar 30x10x180 mm	180
7	Busbar 30x10x215 mm	215
8	BusBar 30x10x275 mm	275
9	Busbar 30x10x300 mm	300
10	Busbar 30x10x335 mm	335
11	Busbar 30x10x465 mm	465
12	Busbar 30x10x535 mm	535
13	Busbar 30x10x605 mm	605
14	Busbar 30x10x820 mm	820
15	Busbar 30x10x880 mm	880
16	Busbar 30x10x970 mm	970
17	BusBar 30x5x1000 mm	1000
18	Busbar 30x5x235 mm	235
19	Busbar 30x5x260 mm	260
20	Busbar 30x5x320 mm	320
21	Busbar 30x5x380 mm	380
22	Busbar 30x5x415 mm	415
23	Busbar 30x5x475 mm	475
24	Busbar 30x5x540 mm	540
25	Busbar 30x5x810 mm	810

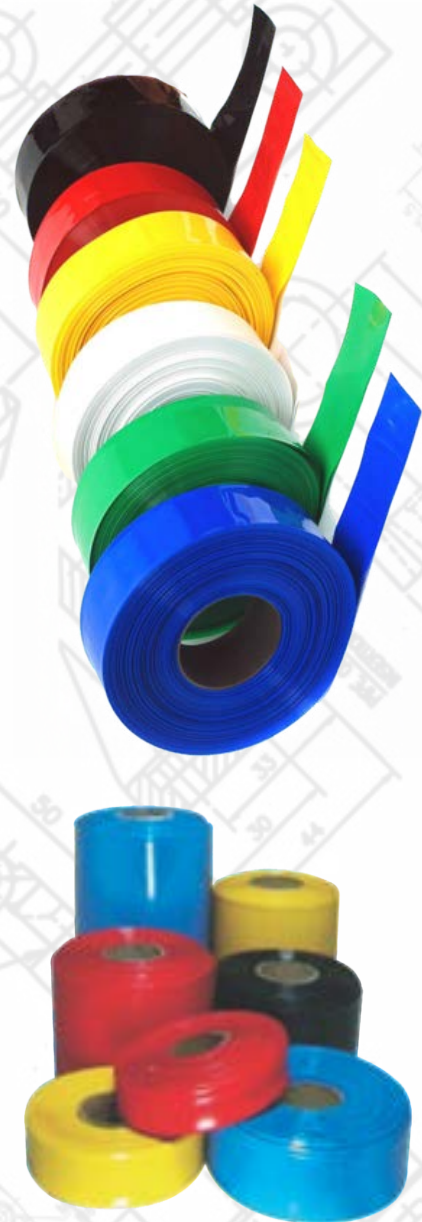
**CUSTOMIZE SIZE IS AVAILABLE
AS PER REQUIREMENTS**



HEAT SINKABLE SLEEVE (BUS-BAR SLEEVE)

Sr.	Size	Bus Bar Size
1	20 mm	12 x 3, 9 x 6 mm
2	25 mm	12 x 6, 12 x 9, 15 x 16, 20 x 3mm
3	30 mm	16 x 6, 19 x 6, 20 x 3 mm
4	35 mm	20 x 6, 25 x 3 mm
5	41 mm	25 x 6, 25 x 10, 25 x 12 mm
6	48 mm	25 x 12, 30 x 6, 30 x 10 mm
7	55 mm	30 x 12, 38 x 6 mm
8	61 mm	38 x 9, 38 x 12, 40 x 6, 40 x 10 mm
9	73 mm	50 x 6 mm
10	81 mm	50 x 10, 50 x 12 mm
11	85 mm	60 x 6 mm
12	93 mm	60 x 12, 75 x 6 mm
13	103 mm	75 x 10, 75 x 12 mm
14	110 mm	90 x 6, 90 x 12 mm
15	128 mm	100 x 6, 100 x 10 mm
16	140 mm	100 x 12 mm
17	150 mm	120 x 6 mm
18	170 mm	125 x 6, 125 x 12, 150 x 6 mm
19	190 mm	150 x 6, 150 x 10, 150 x 12 mm
20	210 mm	175 x 6, 175 x 10, 175 x 12 mm
21	230 mm	200 x 6, 200 x 12 mm

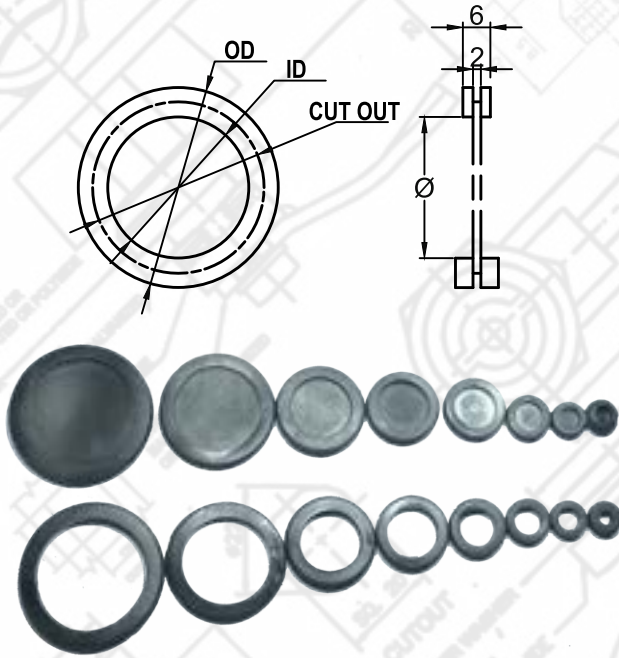
Undergo unto 40% Shrinkage at 90 - 95 Degree C
Thickness of Sleeve : 150 Micron
Standard Roll in 50 Meters



BUS-BAR SLEEVE HOT GUN



RUBBER GROMMET



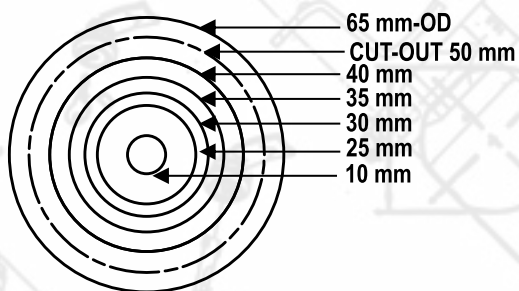
SR.	Cut-out	OPEN		CLOSE	
		ID	OD	ID	OD
1	10 mm	8	14	8	14
2	12 mm	9	15	9	15
3	16 mm	12	19	12	19
4	19 mm	16	24	16	24
5	22.5 mm	18	26	18	26
6	25 mm	22	31	22	31
7	30 mm	26	38	26	38
8	40 mm	33	48	33	48
9	50 mm	45	59	45	59
10	65 mm	59	74	59	74

PVC GROMMET



SR.	Cut-out	OPEN		CLOSE	
		ID	OD	ID	OD
1	12 mm	9.5	15	9.5	15
2	16 mm	12	18	12	18
3	19 mm	15.5	23.5	15.5	23.5
4	22.5 mm	19	27	19	27
5	25 mm	21	28.5	21	28.5
6	30 mm	26	38	26	38
7	43 mm	40	48.5	40	48.5
8	50 mm	48	55.5	48	55.5

UNIVERSAL RUBBER GROMMET



- In a Single Grommet Various Cut Sizes can be possible

PVC YELLOW FERRULE

Sr.	Size
1	Small T
2	Big T
3	0.5 Sq. mm.
4	0.65 Sq. mm.
5	1.0 Sq. mm.
6	1.5 Sq. mm.
7	2.5 Sq. mm.
8	4.0 Sq. mm.
9	6.0 Sq. mm.
10	10.0 Sq. mm.
11	16.0 Sq. mm.
12	25.0 Sq. mm.
13	35.0 Sq. mm.
14	50.0 Sq. mm.
15	ERT – 1 Color Ferrule
16	ERT – 2 Color Ferrule
17	1.5 Sq. mm Round Color
18	2.5 Sq. mm Round Color



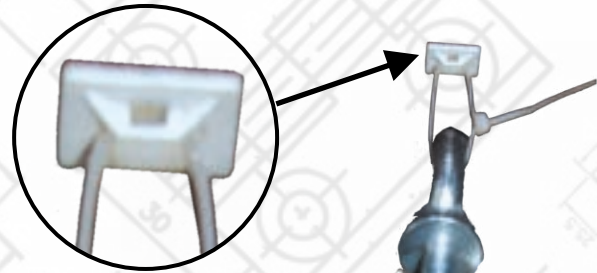
PRINTING SLEEVE

Sr.	Size	Sr.	Size
1	2.2 mm	10	5.2 mm
2	2.5 mm	11	5.5 mm
3	3.0 mm	12	6.0 mm
4	3.2 mm	13	6.3 mm
5	3.5 mm	14	6.5 mm
6	4.0 mm	15	7.0 mm
7	4.2 mm	16	8.0 mm
8	4.5 mm	17	10 mm
9	5.0 mm		



CREDDLE / TIE MOUNT

Sr.	Size
1	19 x 19 – Regular
2	19 x 19 Heavy Duty
3	25x 25 – Regular
4	25 x 25 Heavy Duty



19 X 19 Heavy Duty

**19 x 19 Load Capacity
upto 6 Kg**

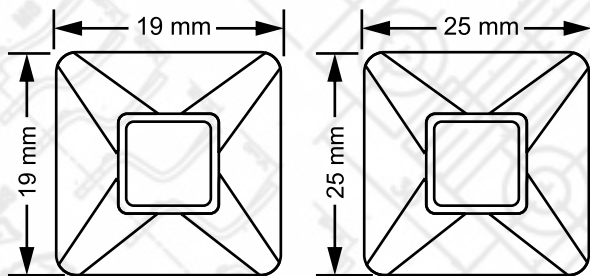
**25 x 25 Load Capacity
upto 10 kg**



6 KG Weight

FEATURES

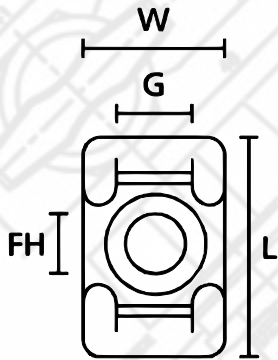
- Screwable or self-adhesive versions.
- Simple to install with a screw or bolt
- Excellent security, particularly in areas of high vibration.
- Maximum surface area with adhesive to achieve high pull-off force.
- 4-way entry for cable tie for quicker and more flexible installation



APPLICATION

Where speed, simplicity and a firm fixing base are required these self adhesive clips are ideal. Particularly suitable for use in control cabinets, telecoms equipment or domestic appliances where the use of holes, screws, or nuts and bolts is impractical or undesirable.





for Hole (FH) 5.1 mm
Height (H) 9.40 mm
Length (L) 21.8 mm
Max. Tie Width (G) 7.9 mm
Strap Width max. (G) 0.31"

SADDLE

CREDDLE


TERMINAL END CLAMPS

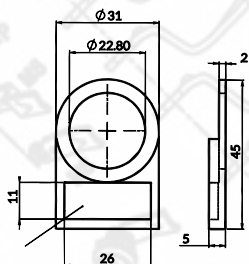

**SV-02
MCB
Side Clamp**

**SV-01
MCB Terminal
End Clamp**

**80 X 80 X 40
PVC TERMINAL BOX**

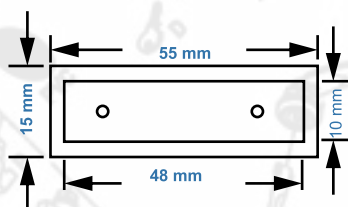
Screw Type Saddle

LEGEND PLATES


**22.5 PVC
LEGEND PLATE**

Blank

Computer Printed

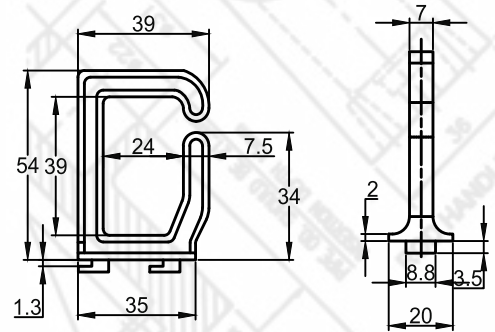
Laser Printed

**50 X 15
PVC LEGEND PLATE**


CABLE TIE



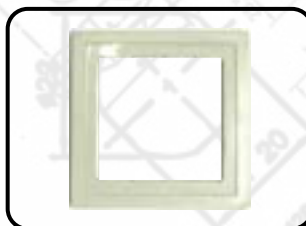
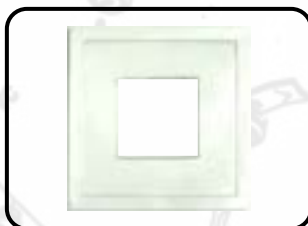
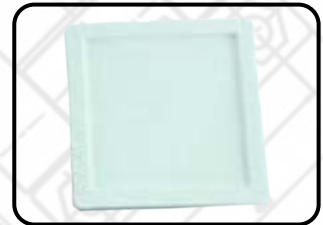
Sr.	Size	Sr.	Size
1	100 mm	6	368 mm
2	150 mm	7	450 mm
3	200 mm	8	550 mm
4	250 mm	9	750 mm
5	300 mm	10	1000 mm

CABLE GUIDE CLIP



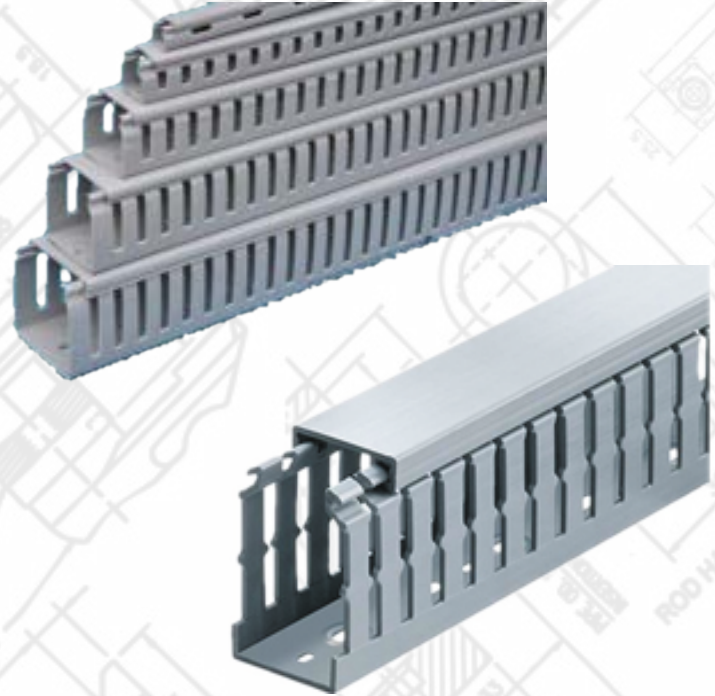
SPARE PLATES / EXTRA CUTOUT PLATES

Sr.	Size	Sr.	Size
1	48 x 48	6	96 x 96 with cut out of 48 x 48 (ID)
2	72 x 72	7	96 x 96 with cut out of 72 x 72 (ID)
3	72 x 72 with cut out of 48 x 48 (ID)	8	Meter Glass 96 x 96 Screw Type transparent
4	48 x 96	9	Meter Glass 96 x 96 Snap Type transparent
5	96 x 96	10	Meter Glass 198 x 96 Snap Type transparent



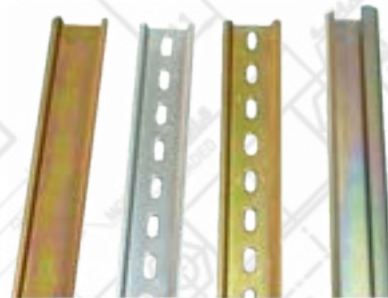
PVC CHANNEL

Sr.	Size H x W (mm)
1	25 x 25
2	30 x 25
3	40 x 30
4	45 x 25
5	45 x 45
6	45 x 60
7	60 x 25
8	60 x 45
9	60 x 60
10	75 x 25
11	75 x 45
12	75 x 60
13	75 x 75
14	80 x 25
15	80 x 45
16	80 x 80
17	100 x 100
Note: P2 & P3 slots will be available	



TERMINAL CHANNEL

Sr.	Size
1	MCB Channel
2	Terminal Channel (C Type)
3	Micro Channel
4	MCB Deep Channel



Z CLAMP (MCB CHANNEL CLAMP)

Sr.	Size
1	Z Clamp



PANEL LOCK

LOCK
ACCESSORIES

3 POINT LOCK

PANEL HANDLES

PANEL HINGES

AIR-VENT
FAN FILTERS

DRAG CHAIN

KNOB

BUS-BAR

GROMMET

PVC YELLOW
FERRULE

Wire
ACCESSORIES

OTHER
ACCESSORIES


FLEXIBLE POLYAMIDE CONDUITS



Sr.	Size	OD	ID	STD Packing
1	PG 7	10	6.5	100
2	PG 9	13	10	100
3	PG 11	15.8	12	50
4	PG 13.5	18.5	14.3	50
5	PG 16	21.2	17	50
6	PG 21	28.5	23	50
7	PG 29	34.5	29	25
8	PG 36	42.5	36	25
9	PG 48	54.5	48	25

FLEXIBLE POLYAMIDE CONDUITS GLAND



Sr.	Size	Sr.	Size
1	PG 7	6	PG 21
2	PG 9	7	PG 29
3	PG 11	8	PG 36
4	PG 13.5	9	PG 48
5	PG 16		

PVC CORRUGATED PIPE



Sr.	Size
1	16 mm
2	20 mm
3	25 mm
4	32 mm
5	40 mm
6	50 mm

PVC CORRUGATED PIPE FITTINGS



Sr.	Size
1	CP 16
2	CP 20
3	CP 25
4	CP 32
5	CP 40
6	CP 50

PVC PIPE METAL BREADED (SWR)

Sr.	Size in mm
1	10 x 15
2	15 x 20
3	20 x 25
4	25 x 30
5	30 x 35
6	40 x 45
7	50 x 55



PIPE FITTINGS FOR METAL BREADED PIPE

Sr.	Size
1	10 x 15 PPF 9
2	15 x 20 PPF 13.5
3	20 x 25 PPF 16
4	25 x 30 PPF 21
5	30 x 35 PPF 29
6	40 x 45 PPF 40
7	50 x 56 PPF 48



PVC PIPE COUPLER

Sr.	Size in mm
1	10 x 15
2	15 x 20
3	20 x 25
4	25 x 30
5	30 x 35
6	40 x 45



ABS PUSH BUTTON BOX

Sr.	Size	Sr.	Size
1	1 way	4	4 way
2	2 way	5	5 way
3	3 way	6	6 way



PANEL LOCK

LOCK
ACCESSORIES

3 POINT LOCK

PANEL HANDLES

PANEL HINGES

AIR-VENT
FAN FILTERS

DRAG CHAIN

KNOB

BUS-BAR

GROMMET

PVC YELLOW
FERRULE

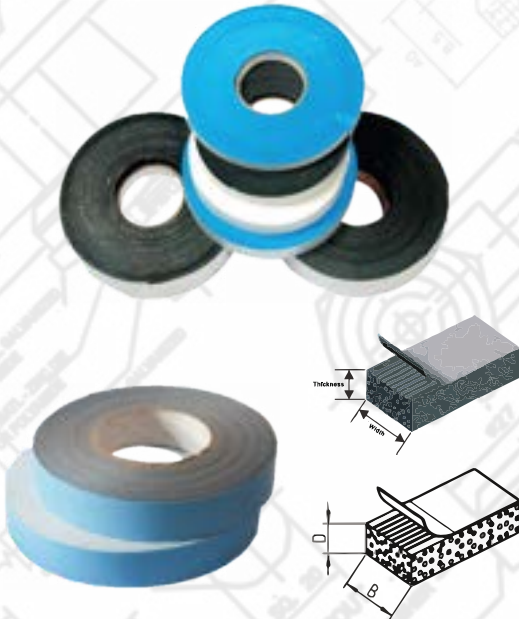
Wire
ACCESSORIES

OTHER
ACCESSORIES


SELF-ADHESIVE GASKET

Single Side Eva Foam Type Gasket

Sr.	Size in mm
1	10 x 3
2	10 x 5
3	15 x 3
4	15 x 5
5	20 x 3
6	20 x 5
7	25 x 3
8	25 x 5
9	30 x 3
10	30 x 5
11	40 x 3
12	40 x 5
13	50 x 3
14	50 x 5



Foam (D) Type Rittal Gasket

Size : 12 x 5, 15 x 7, 20 x 7, 25 x 10 mm

EPDM GASKET

Sr.	Size
1	EPDM Gasket with side bubble
2	EPDM Gasket with top bubble
3	U Rubber Gasket
4	Two Way Sheet Metal Gasket

Sr.	Size
5	U Type with Metal Breaded Gasket
6	U Type Rubber Gasket
7	Foam Type Gasket
8	S Type Glass Door Gasket



EPOXY POWER TERMINAL (TPN)

Sr.	Size	DMC	
1.	63 amp	3 way	4 way
2.	100 amp	3 way	4 way



EPOXY ROUND SUPPORT

Sr.	Size in mm	Sr.	Size in mm
1	25 x 6	5	40 x 10
2	30 x 6	6	50 x 10
3	30 x 8	7	60 x 12
4	40 x 8	8	70 x 12



EPOXY L SUPPORT (SMC-DMC)

Sr.	Size
1	L – 60
2	L – 85
3	L – 105
4	L – 125
5	L – 150



EPOXY FINGER SUPPORT

Sr.	Size	SMC – DMC & W – K Types			
1.	6 mm	1 way	2 way	3 way	4 way
2.	10 mm	1 way	2 way	3 way	4 way
3.	12 mm	1 way	2 way	3 way	4 way



PANEL LOCK

LOCK
ACCESSORIES

3 POINT LOCK

PANEL HANDLES
PANEL HINGES

AIR-VENT
FAN FILTERS

DRAG CHAIN

KNOB

BUS-BAR

GROMMET

PVC YELLOW
FERRULE

Wire
ACCESSORIES

OTHER
ACCESSORIES


DOCUMENT HOLDER



Sr.	Size
1	A4
2	A5

NYLON CAP FOR HEX BOLT



Sr.	Size	Sr.	Size
1	6 mm	3	10 mm
2	8 mm	4	12 mm

CAGE NUT



Sr.	Size
1	M5
2	M6
3	M8

BRASS THREAD REDUCER



Sr.	Size
1	M63 x PG 21
2	M63 x PG 36

MCCB COVER



Sr.	Size
1	100 amp
2	200 amp
3	400 amp

LUGS

Sr.	Size
1	0.5 Sq. mm to 50 Sq. mm End Sleeve
2	0.5 Sq. mm to 16 Sq. mm Twin End Sleeve
3	1.5, 2.5, 4-6 Sq. mm Snap-on Lug
4	1.5 Sq. mm to 150 Sq. mm Ring Terminal
5	1.5 Sq. mm to 1000 Sq. mm Aluminium Lug
6	1.5 Sq. mm to 1000 Sq. mm Aluminium Lug (Pin Type)
7	1.5 Sq. mm to 95 Sq. mm Copper Lug (Pin Type)



PVC SPIRAL WHITE & BLACK COLOR

Sr.	Size	Sr.	Size
1	3 mm – 1/8	5	16 mm – 5/8
2	6 mm – 1/4	6	19 mm – 3/4
3	10 mm – 3/8	7	25 mm – 1"
4	12 mm – 1/2	8	38 mm – 1 1/2



FERRULE PRINTING MACHINE CARTRIDGE

Sr.	Size
1	Canon Machine Cartridge (Black, Yellow, White)
2	MAX LETA-TWIN Cartridge LM390 (Black, Yellow, White)
3	MAX LETA-TWIN Cartridge LM550 (Black, Yellow, White)
4	Brother Black Cartridge (Black, Yellow, White)



PORCELAIN CONNECTOR



Sr.	Size
1	5 amp 2 way
2	15 amp 1 way
3	15 amp 2 way
4	30 amp 2 way
5	60 amp 2 way



J & K Type Thermo Couple

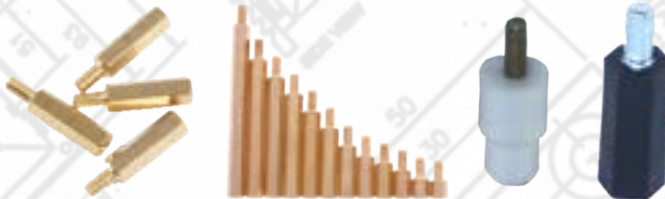


K Type Socket



J Type Socket

PCB STUDS



Sr.	Size
1	4 x 11 mm to 4 x 100 mm Brass
2	6 x 20 mm to 6 x 100 mm Brass
3	4 x 20 mm PVC

TERMINAL MARKER



Sr.	Size
1	White Marker – ELMEX
2	White Marker – Connect Well

PVC CABLE BINDING ROLL & BUTTON



Sr.	Size
1	8 mm Binding Strip (Black, Grey)
2	PVC Button (Black, Grey)

CABLE GLAND

Sr.	Threading	ID
1	PG 7	12.50 mm
2	PG 9	16.50 mm
3	PG 11	17 mm
4	PG 13.5	17.5 mm
5	PG 16	19 mm
6	PG 21	21.5 mm
7	PG 29	26.5 mm
8	PG 36	30.5 mm
9	PG 42	31 mm
10	PG 48	32 mm
11	PG 63	42.5 mm



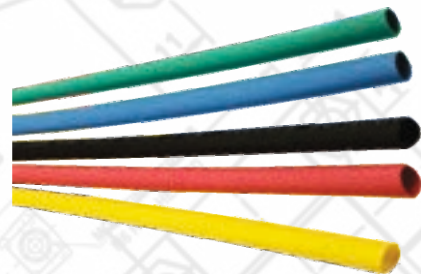
PVC COLOR SLEEVE

Sr.	Size
1	2 mm to 60 mm Sizes Available



POLYTHENE WIRE HEAT SINKABLE SLEEVE

Sr.	Size
1	1 mm to 100 mm Sizes Available



CRIMPING TOOL

Sr.	Description
1	Ring Type Lug Crimping Tool
2	End Sleeve Lug Crimping Tool
3	Hydraulic Crimping Tool



PANEL LOCK

LOCK
ACCESSORIES

3 POINT LOCK

PANEL HANDLES

PANEL HINGES

AIR-VENT
FAN FILTERS

DRAG CHAIN

KNOB

BUS-BAR

GROMMET

PVC YELLOW
FERRULE

Wire
ACCESSORIES

OTHER
ACCESSORIES

NOTES

PANEL LOCK

LOCK
ACCESSORIES

3 POINT LOCK

PANEL HANDLES

PANEL HINGES

AIR-VENT
FAN FILTERS

DRAG CHAIN

KNOB

BUS-BAR

GROMMET

PVC YELLOW
FERRULE

Wire
ACCESSORIES

OTHER
ACCESSORIES



+91 83065 20468
+91 83066 20468



info@verixengineers.com
sales@verixengineers.com



www.ravi-enterprise.com
www.verixengineers.com



MFG. : CONTROL PANEL ACCESSORIES

Vatva, Ahmedabad, Gujarat



RAVI ENTERPRISE
PANEL BOARD ACCESSORIES

CONTACT DETAILS

Corporate Office:

30/A/9/B, Karma Estate, Trikampura Patia,
G.I.D.C., Phase IV, Vatva, Ahmedabad - 382 445 Gujarat INDIA.

Mobile: +91 93774 20468, +91 83066 20468, 83065 20468.

Email: info@verixengineers.com, sales@verixengineers.com

Web.: www.verixengineers.com / www.ravi-enterprise.com

